

## The East Hampshire District Charging Schedule

The CIL charging rates detailed below apply to development within East Hampshire District that is located outside of the South Downs National Park Authority Area and take effect from the 8<sup>th</sup> April 2016.

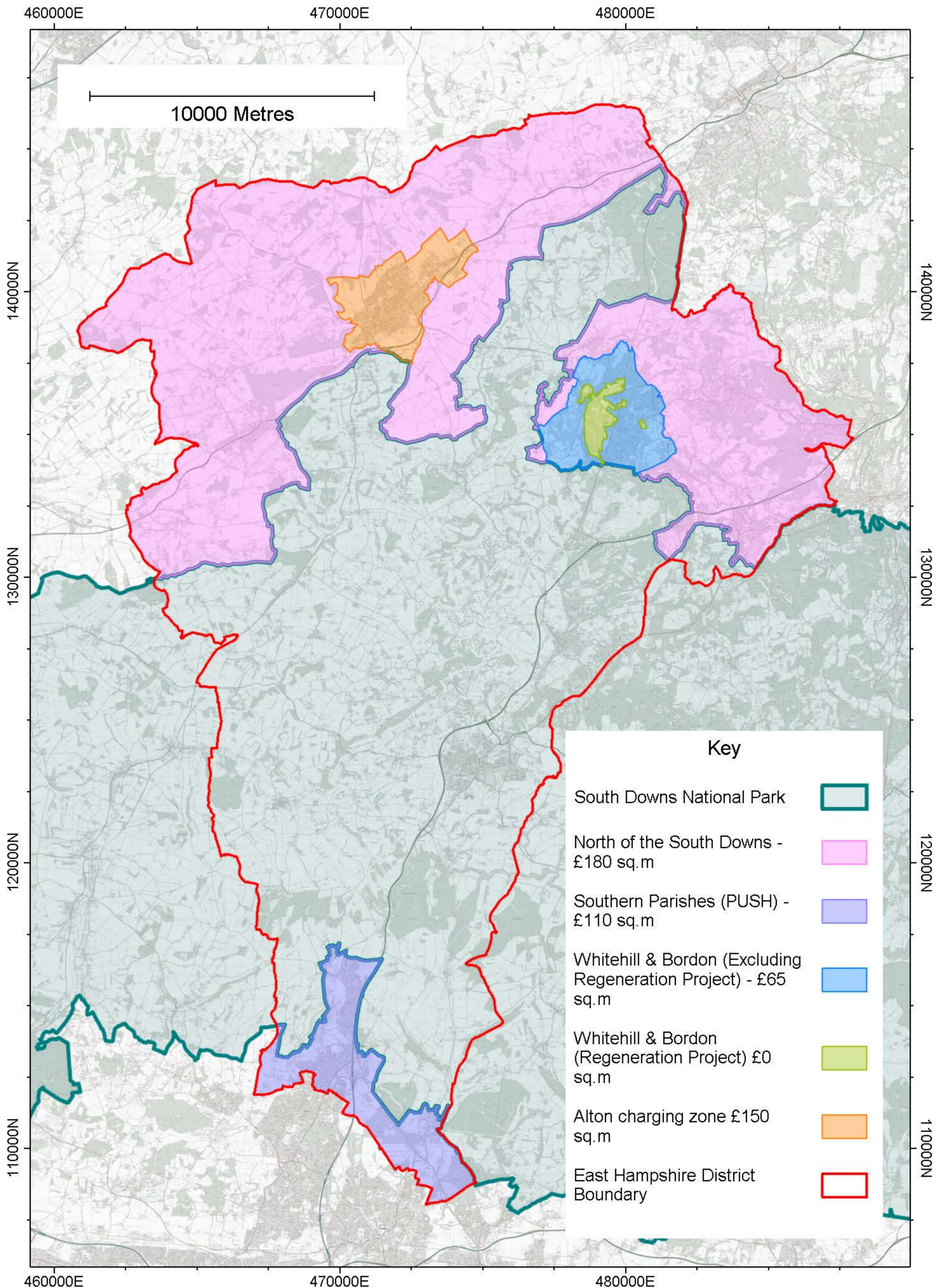
Residential Use <sup>1</sup>	CIL in £/sq m
Residential other than class C2, C2A uses, Extra Care Housing and C3A sheltered housing <sup>2</sup>	Whitehill and Bordon (excluding Regeneration Project CIL Zone) - <b>£65</b>
	Southern parishes of Clanfield, Horndean and Rowlands Castle– <b>£110</b>
	Alton CIL Zone Location <b>£150</b>
	Northern parishes (excluding Whitehill/Bordon and Alton) - <b>£180</b>
Residential C3A sheltered housing in self contained houses and flats with communal facilities and an age restriction	Whitehill and Bordon Regeneration Project CIL Zone - <b>£0</b>
	Rest of the Charging Area - <b>£40</b>
Other Uses	CIL in £/sq m
Offices	£0
Hotels in all areas (excluding the Whitehill & Bordon Regeneration Project Zone)	£70
Hotels in the Whitehill & Bordon Regeneration Project Zone	£0
Retail development <sup>3</sup> in all areas (excluding the Whitehill and Bordon Regeneration Project CIL Zone)	£100
Retail development <sup>3</sup> in the Whitehill and Bordon Regeneration Project CIL Zone	£0
Industrial and warehousing	£0
Student accommodation	£0
All class C2, C2A, C3B, C3C and extra care housing use	£0
Any other development	£0

<sup>1</sup> The proposed 'Residential' levy rates are based on an interim assumption of 40 per cent affordable housing policy in the Local Plan with the exception of a 35% target at Whitehill & Bordon. See the Viability Assessment for further information.

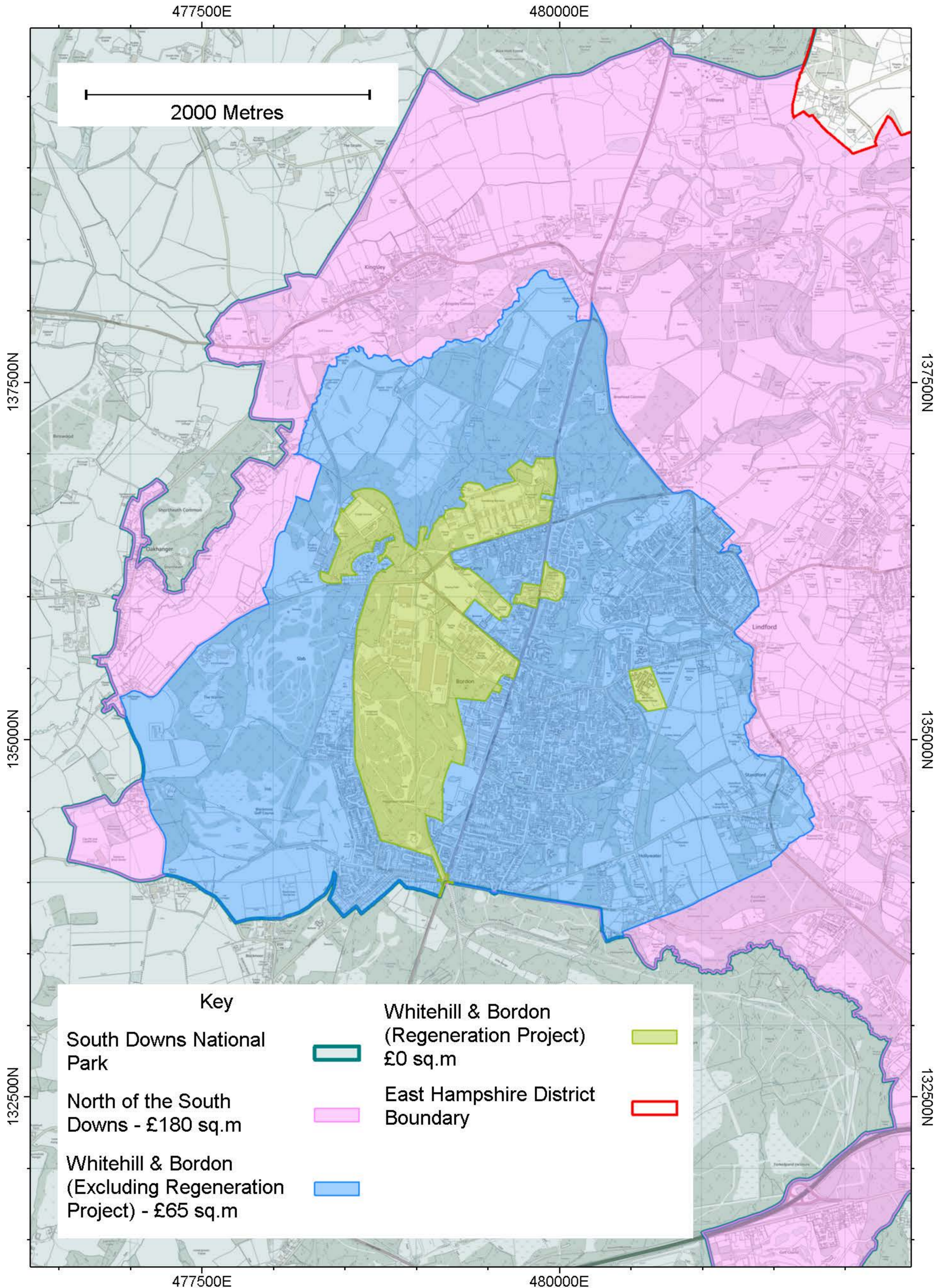
<sup>2</sup> Where C3A sheltered housing is defined as housing in self contained houses and flats with communal facilities and an age restriction.

<sup>3</sup> Use Class E(a), E(b), E(c) and part Sui Generis; previously Use Class A1–A5 as detailed; [https://www.planningportal.co.uk/info/200130/common\\_projects/9/change\\_of\\_use](https://www.planningportal.co.uk/info/200130/common_projects/9/change_of_use)

# East Hampshire District Council CIL Levels



# Inset Map - CIL Levels Whitehill & Bordon



# Inset Map - CIL Levels Alton charging zone

