

## **F. Appendices**

**Appendix A Study area diagrams**

Figure 1 Study area and Local Areas

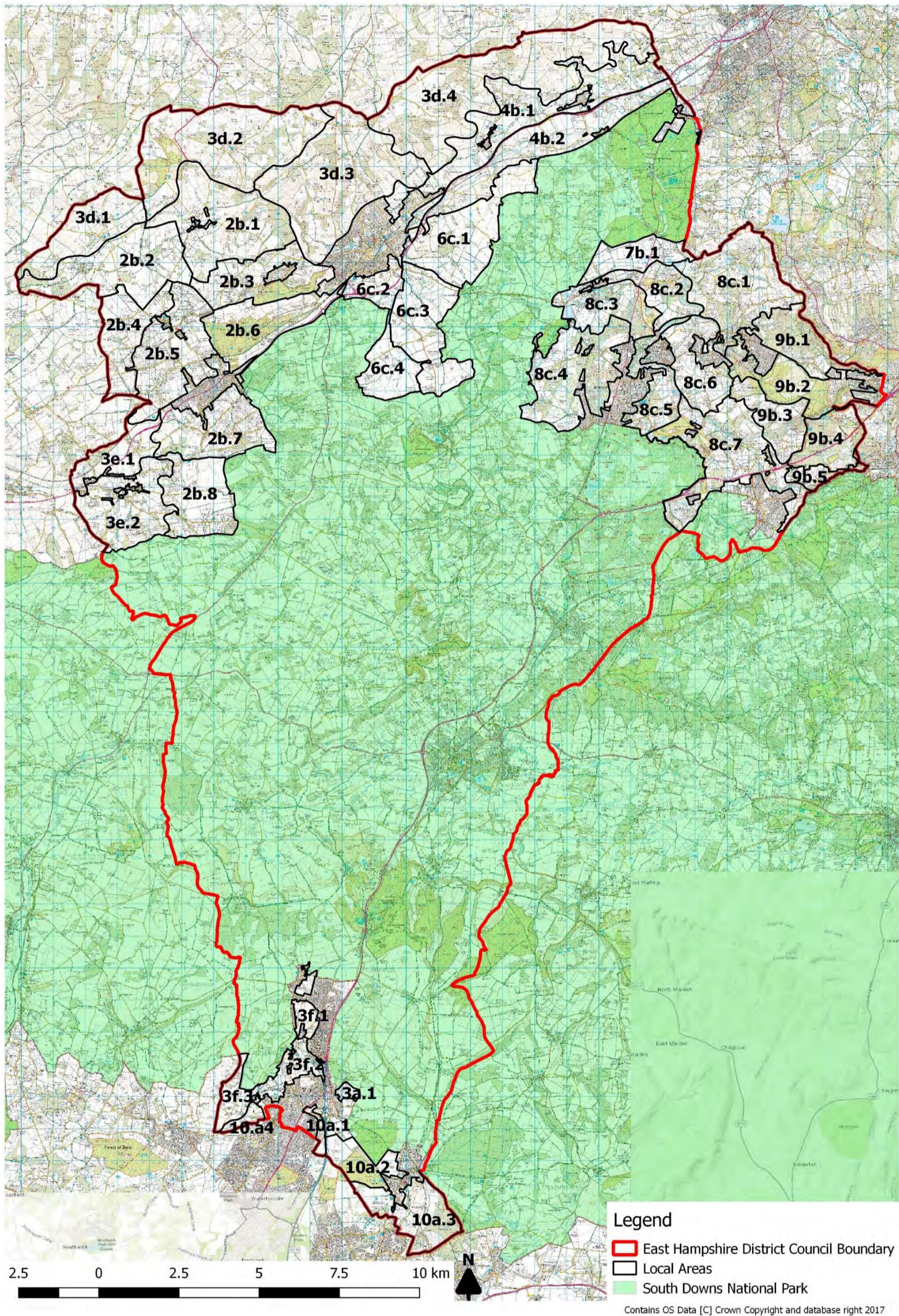


Figure 2 Landscape Designations

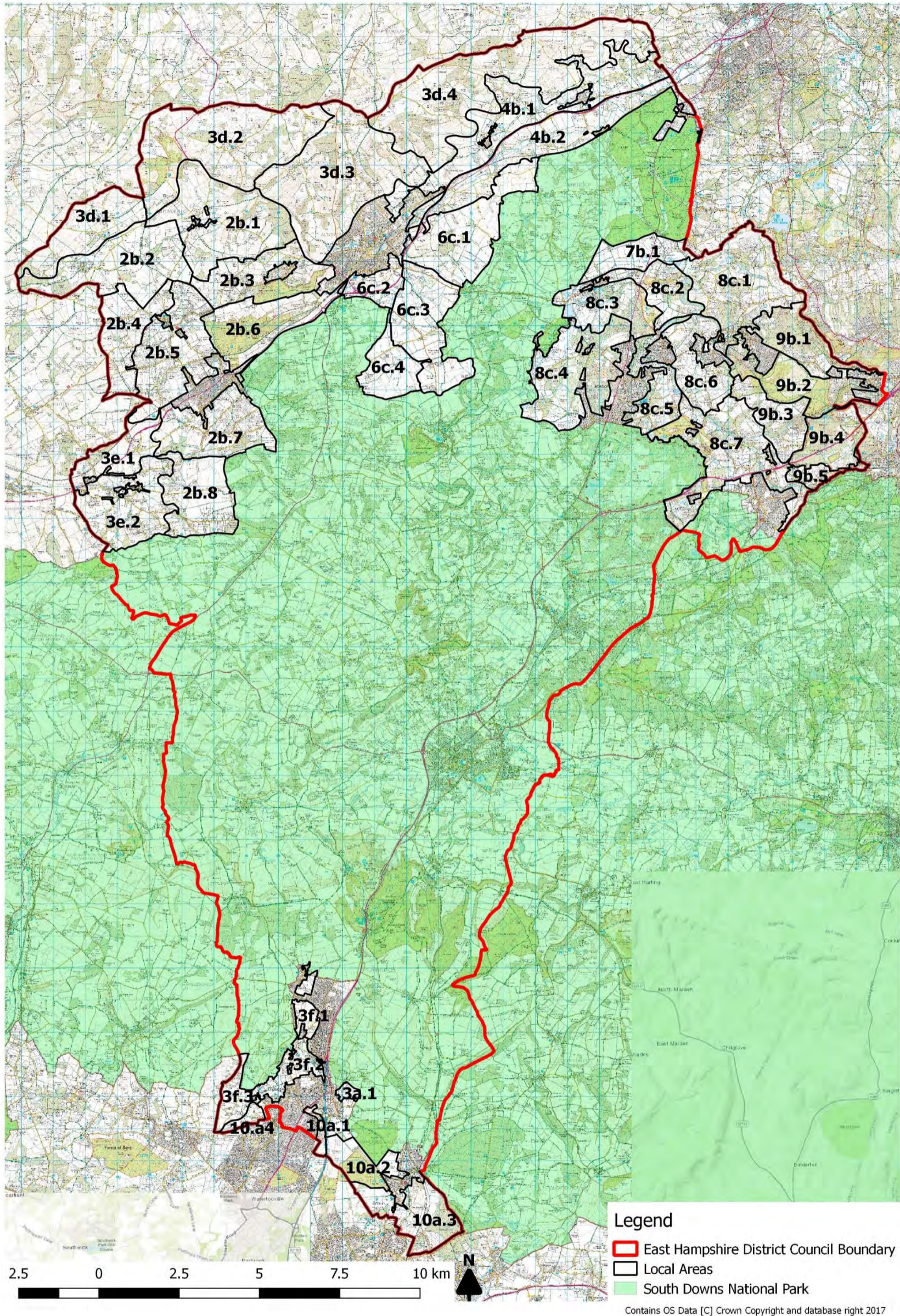


Figure 3 Planning policy

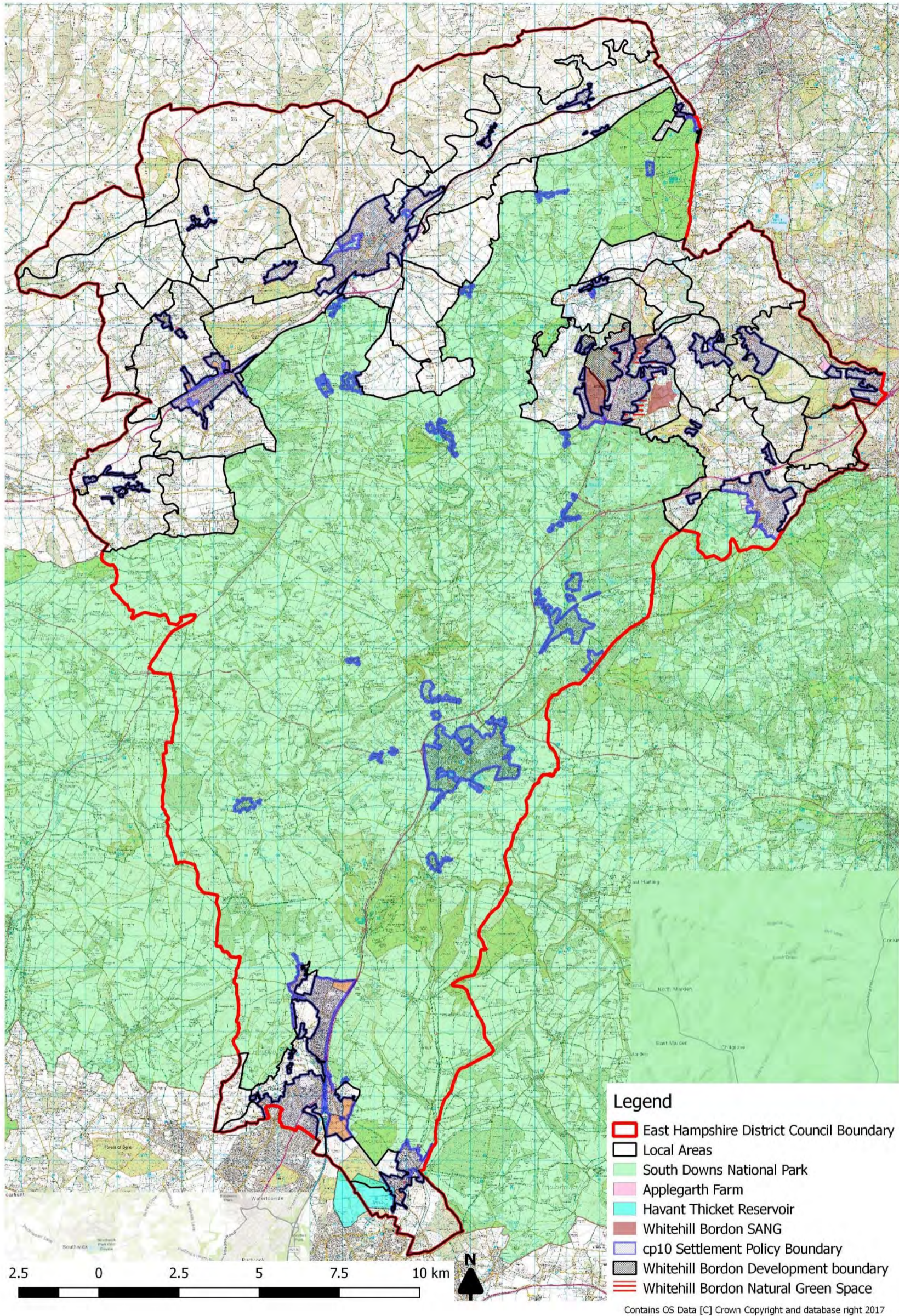


Figure 4 South Downs National Park constraints

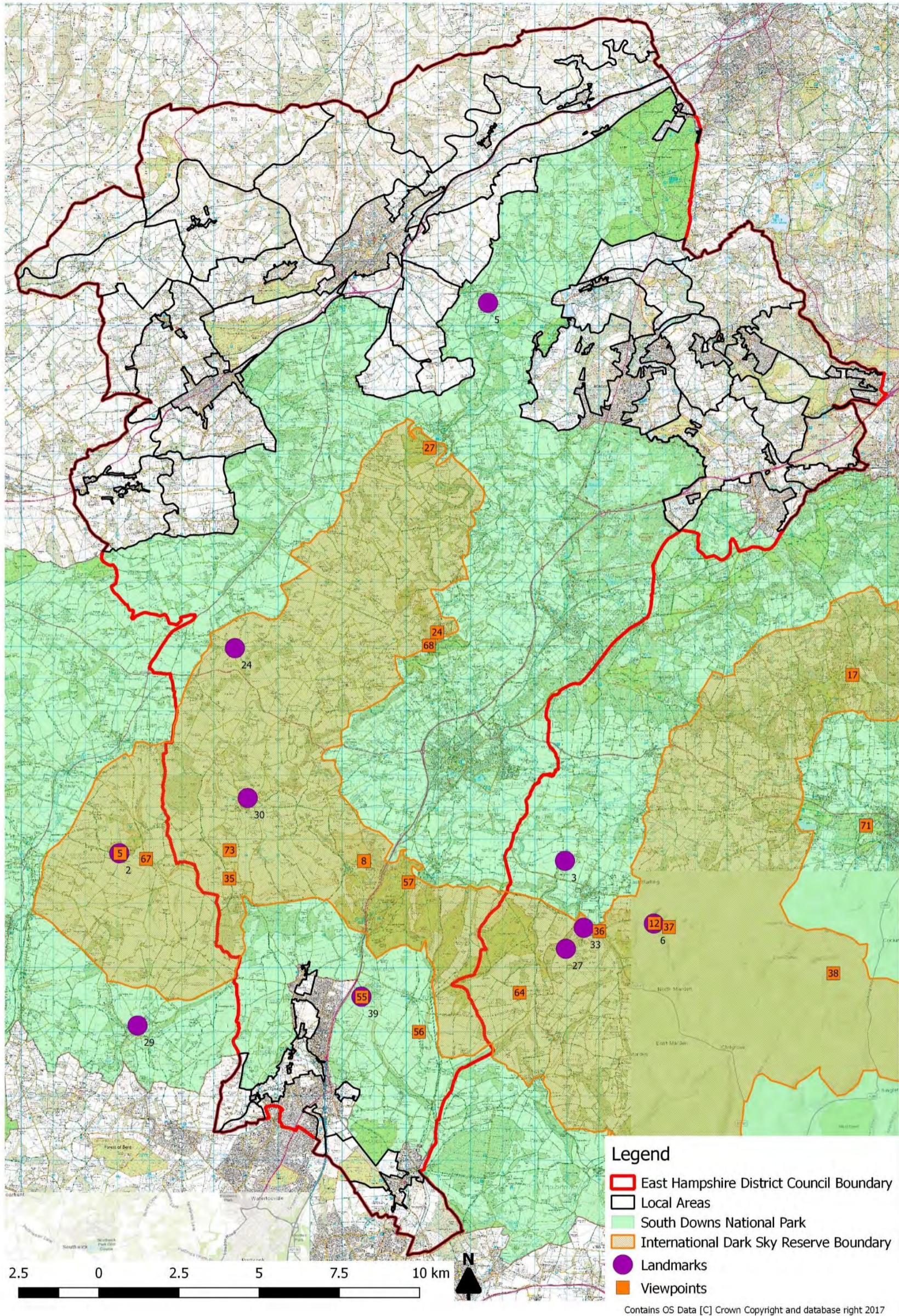


Figure 5 EHDC Landscape character areas

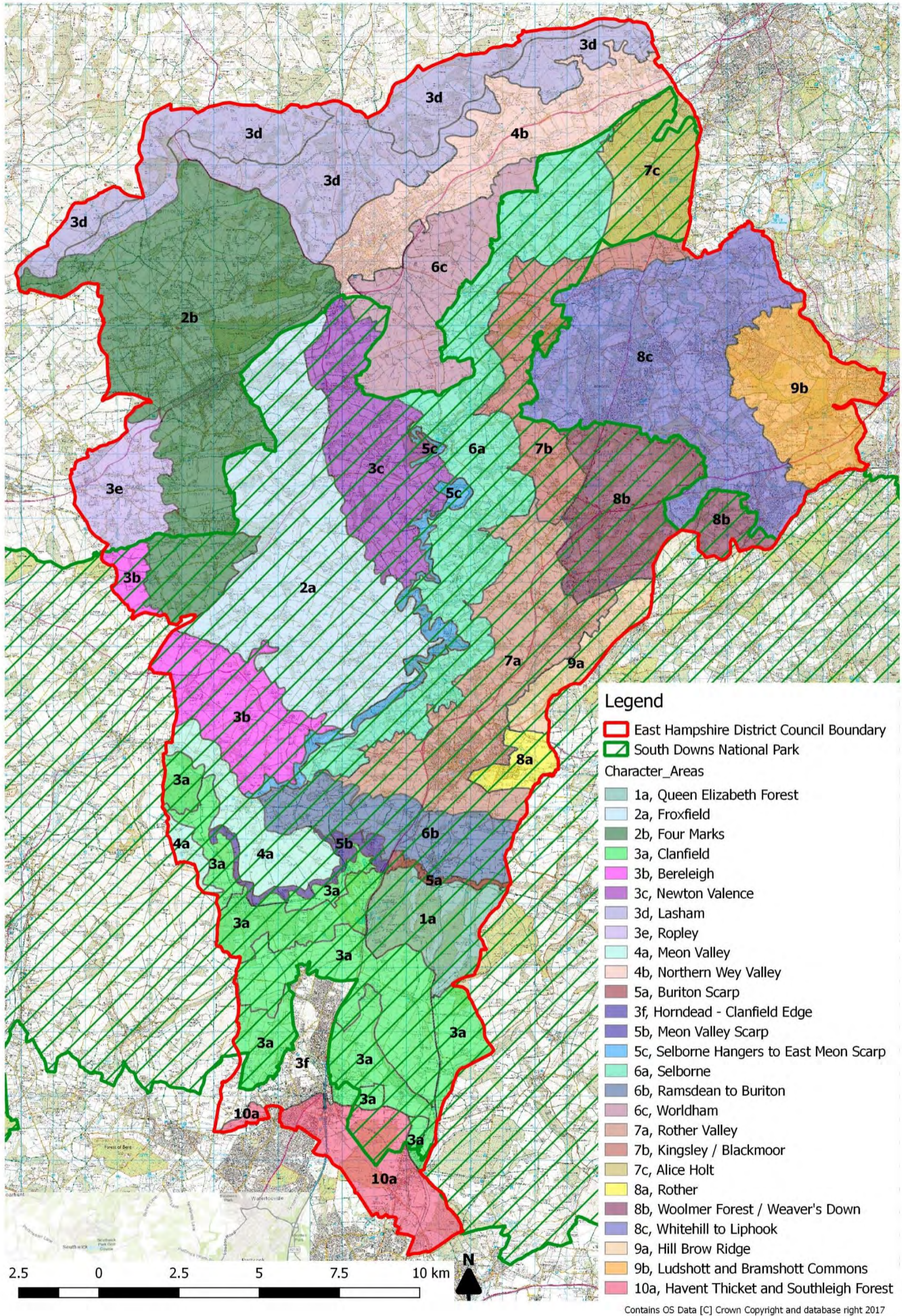


Figure 6 EHDC landscape character types

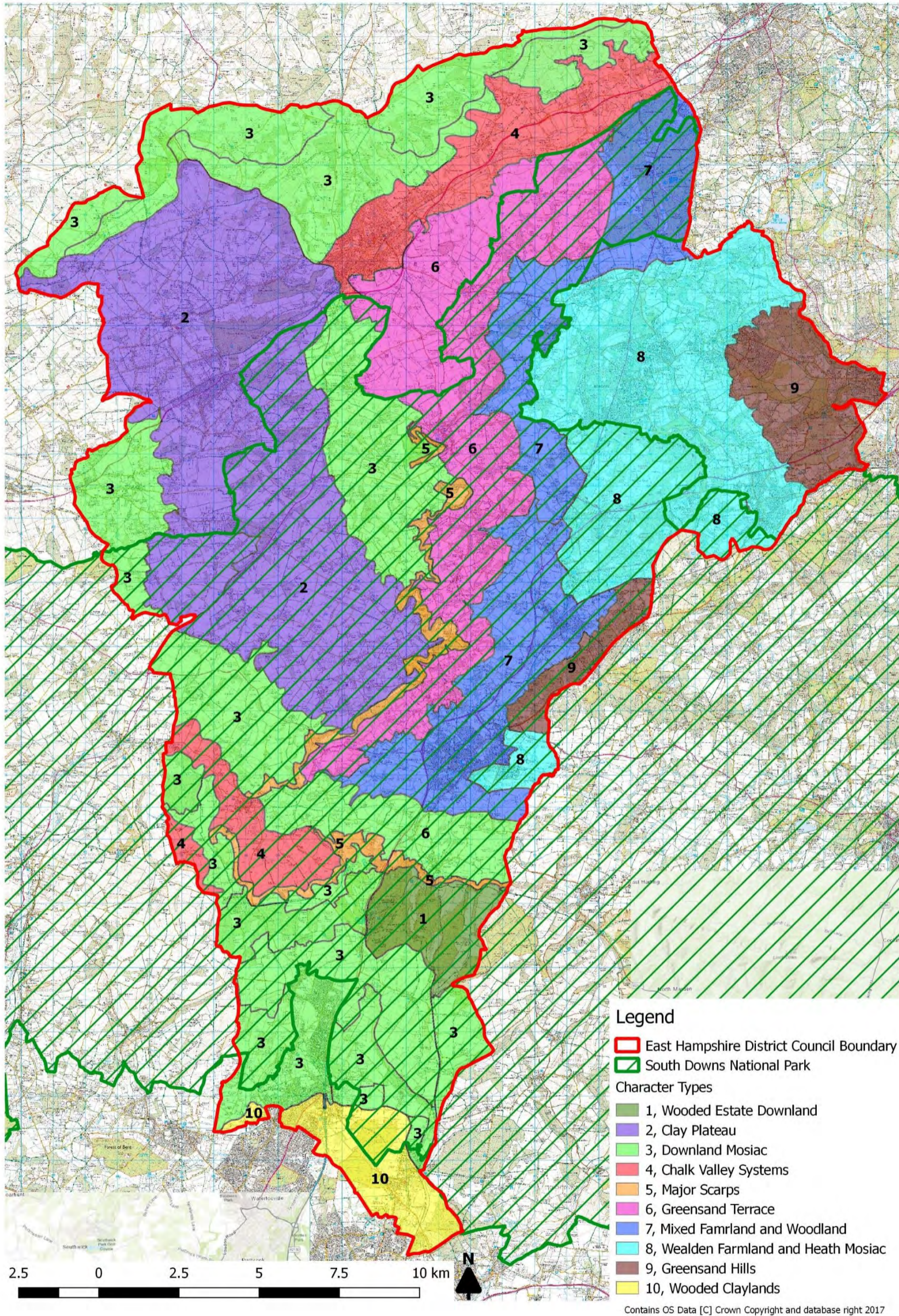




Figure 7 Topography

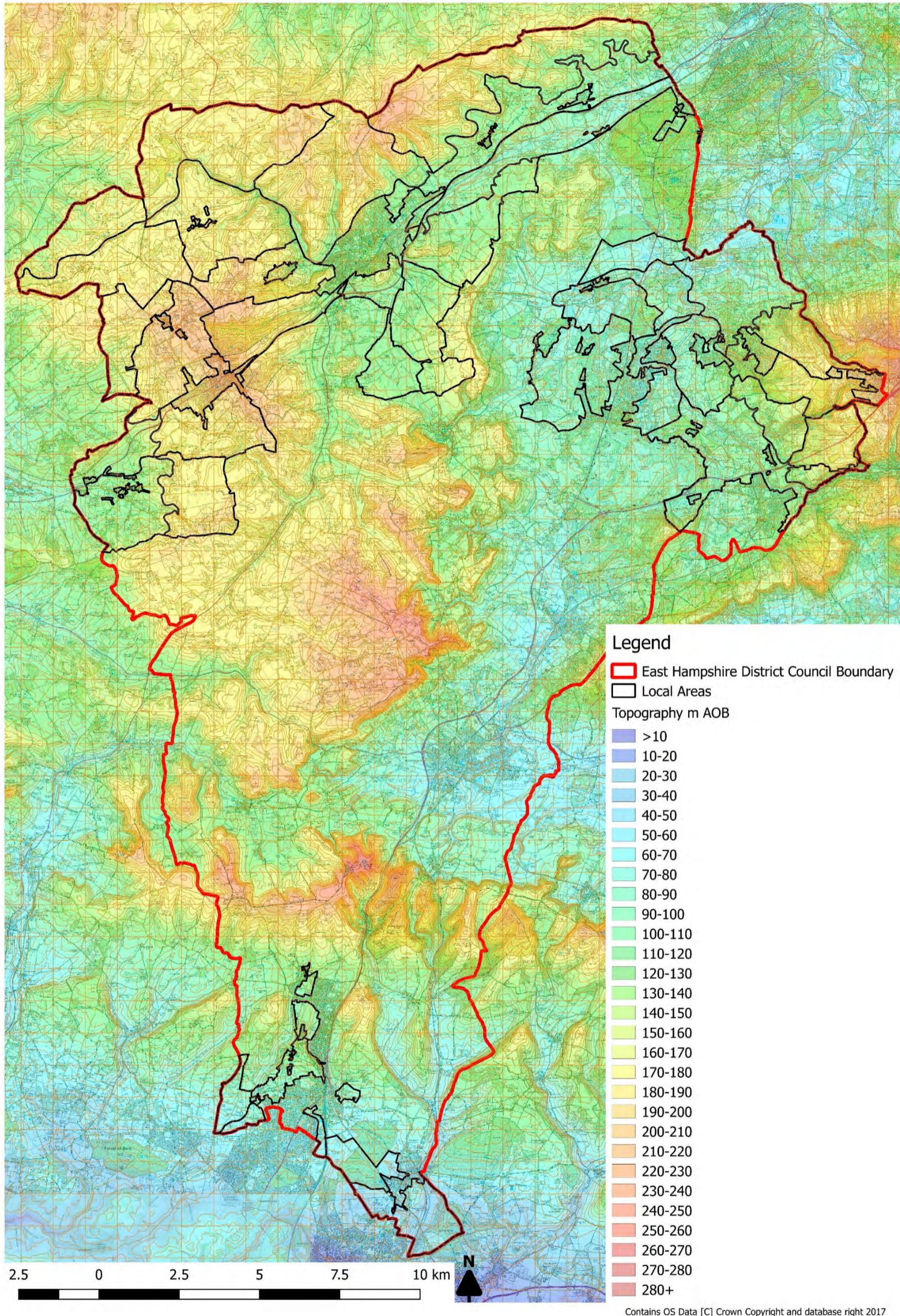


Figure 8 Nature conservation

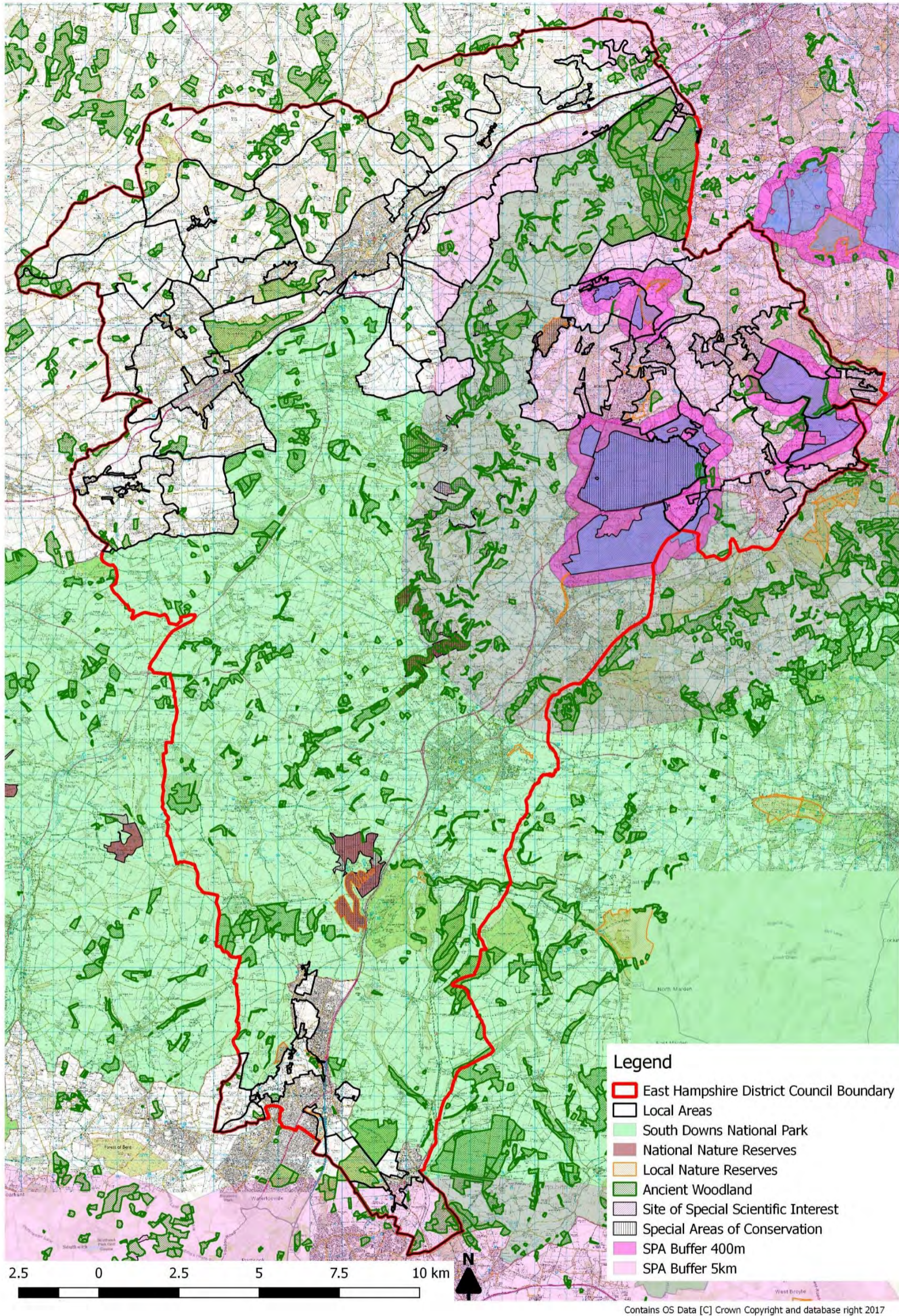


Figure 9 Historic Designations

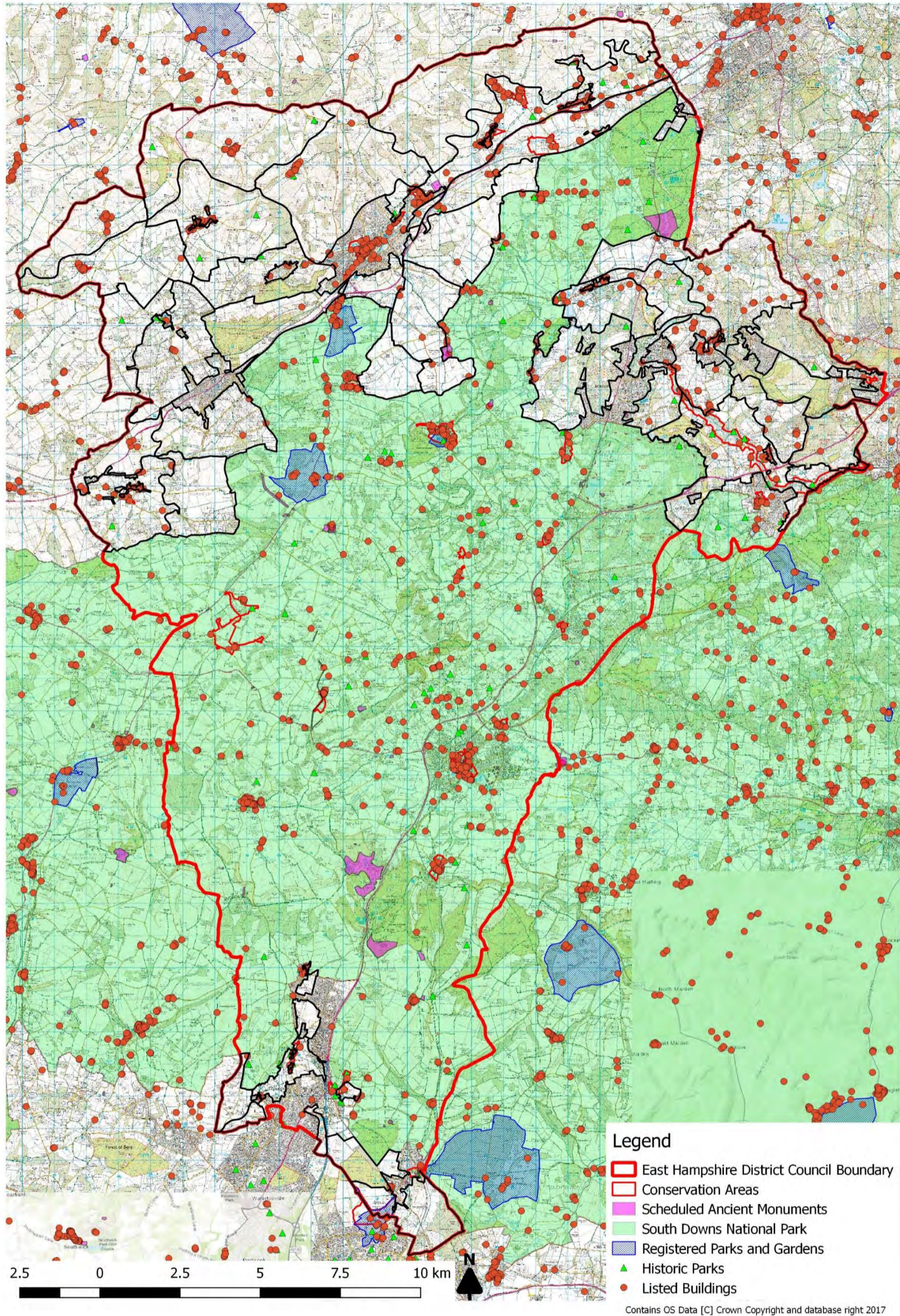


Figure 10 Public access

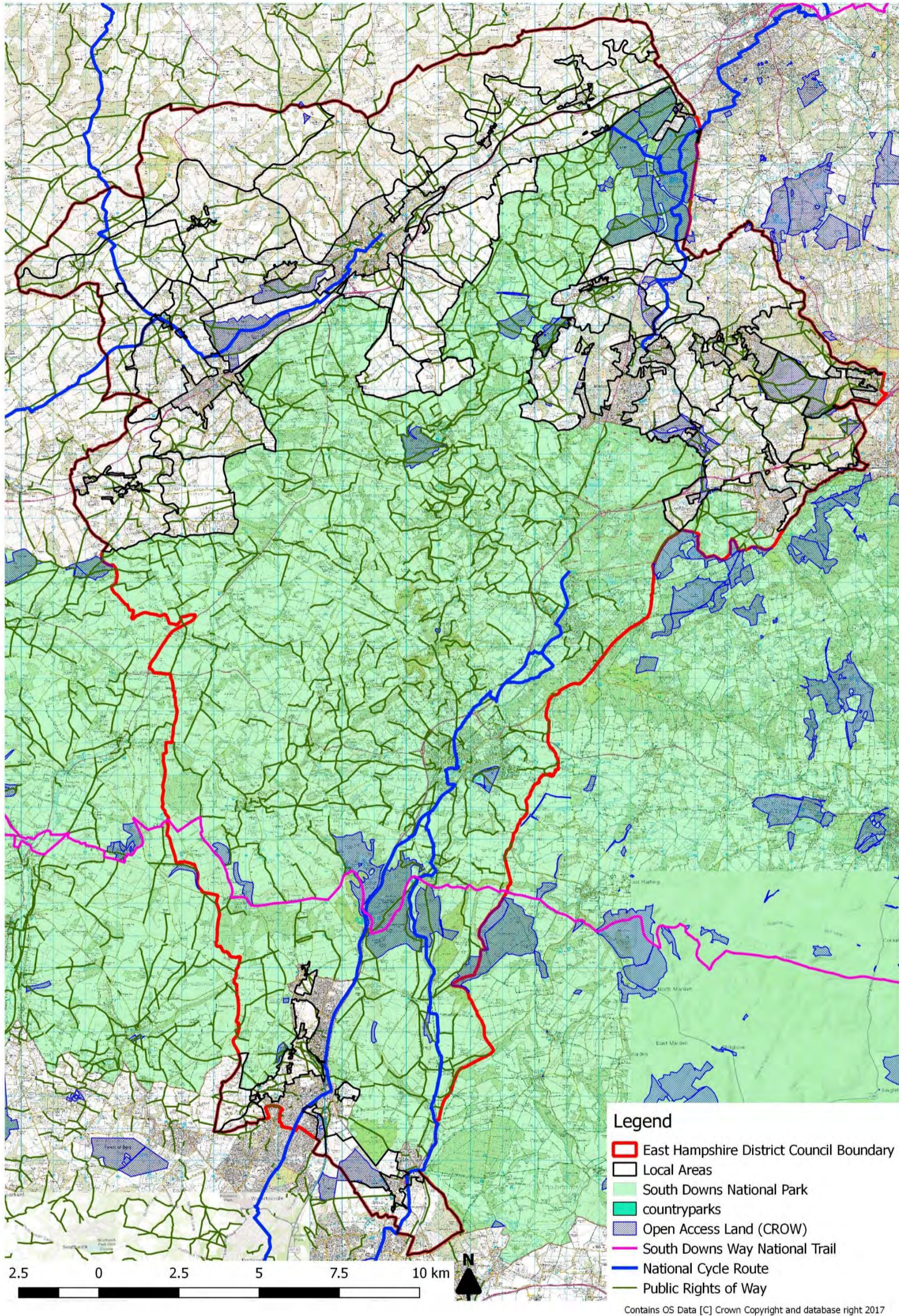


Figure 11 Flood zones

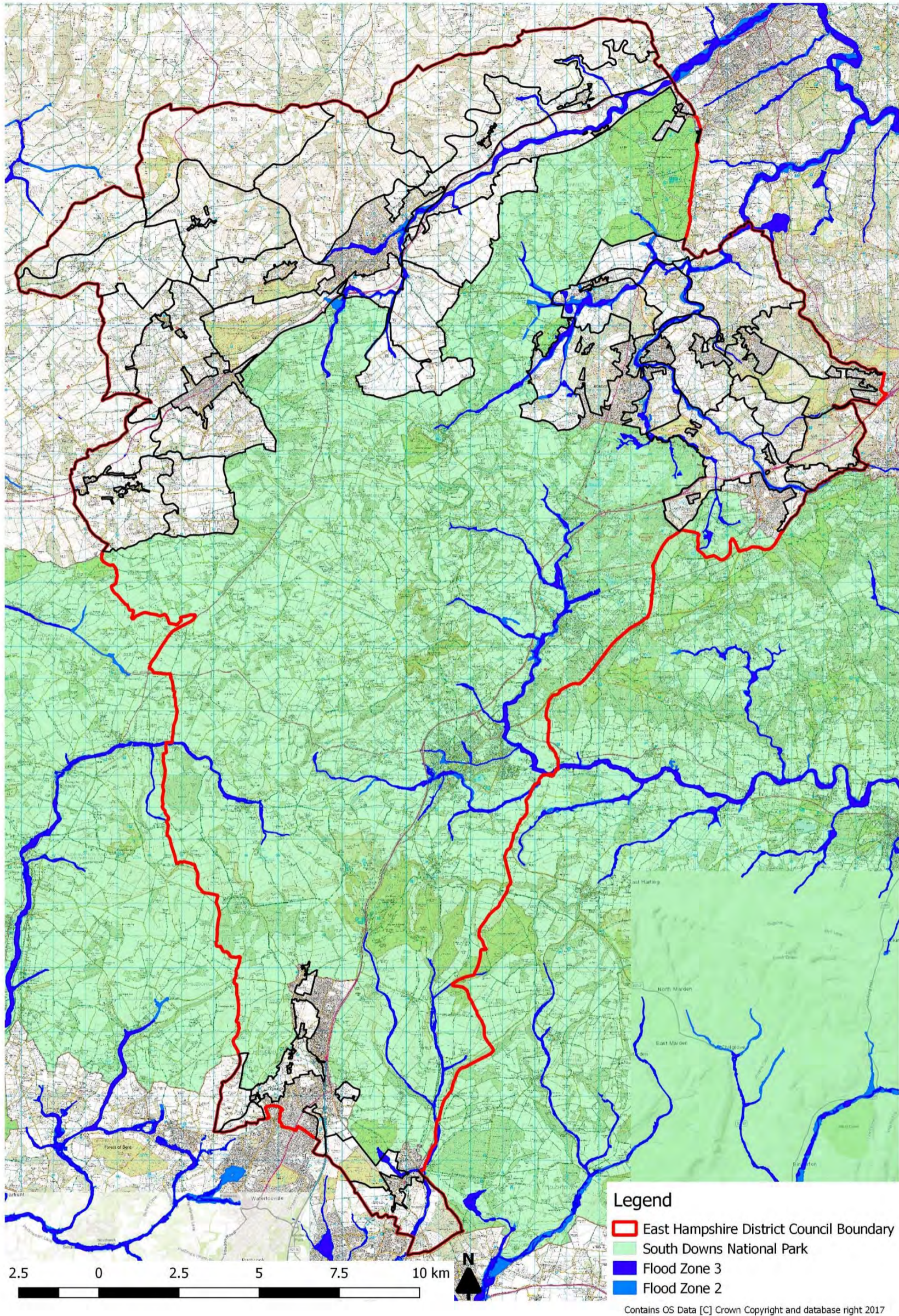
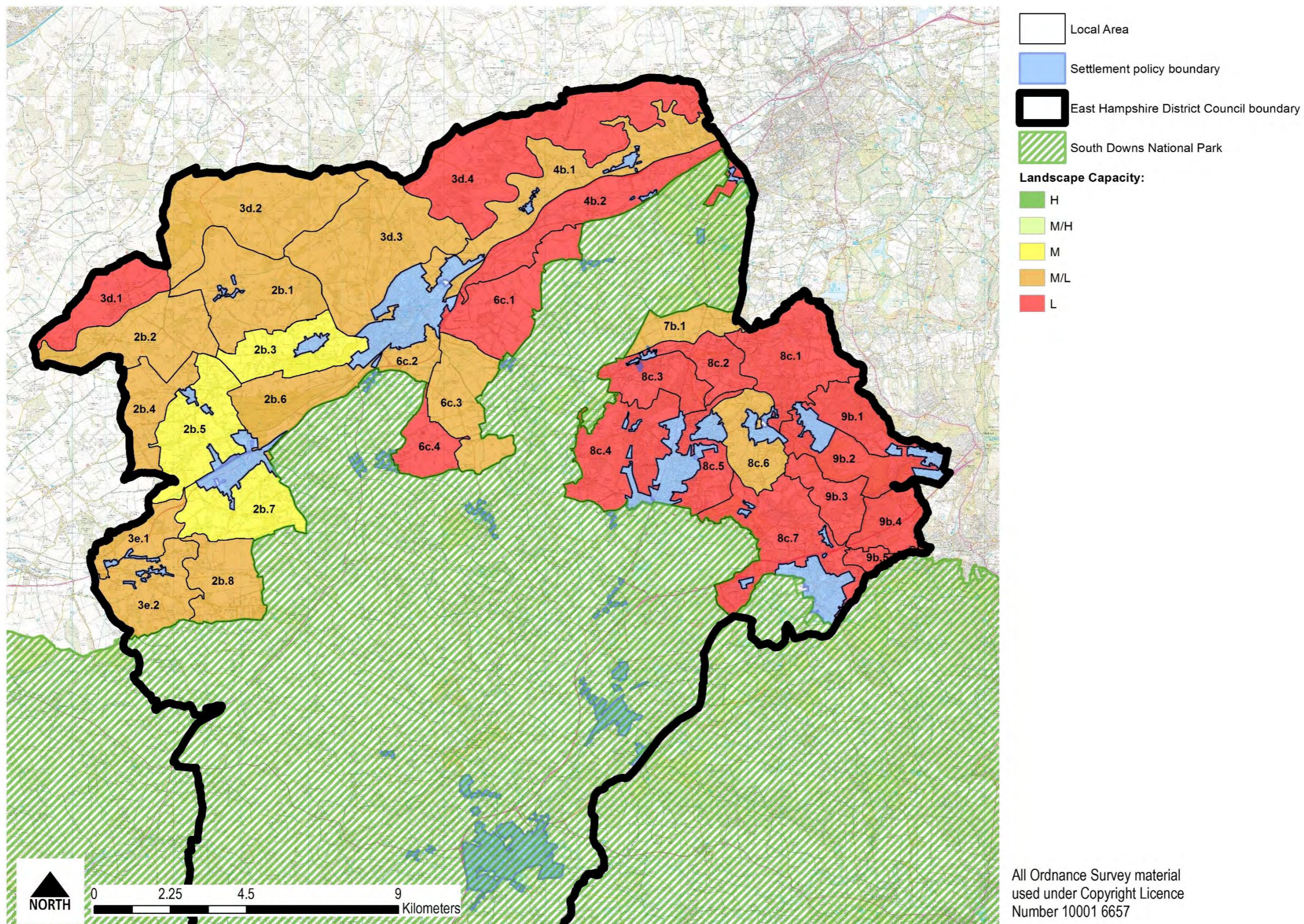
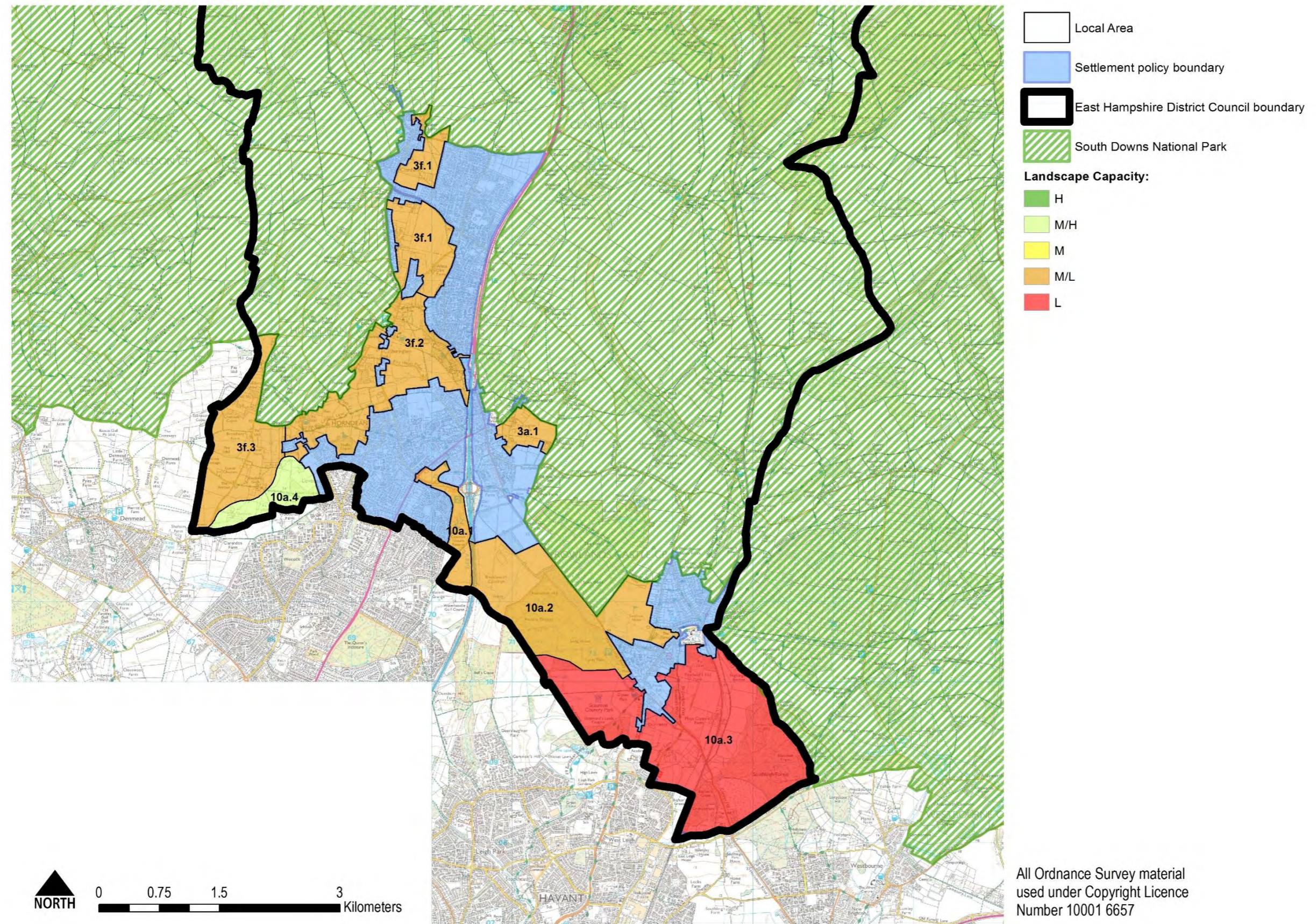


Figure 12 Landscape capacity summary map – North



All Ordnance Survey material used under Copyright Licence Number 10001 6657

Figure 13 Landscape capacity summary map – South



**Appendix B Record sheets (see separate document)**



### **Appendix C Bibliography**

- *East Hampshire District Landscape Character Assessment (2006)*
- *Hampshire County Council's 'Hampshire County Integrated Character Assessment' (updated 2011)*
- *South Downs Integrated Landscape Character Assessment (SDILCA): 2011*
- *Selborne Local LCA (2014)*
- *Rowlands Castle Local LCA (2012)*
- *Landscape Character Assessment Guidance for England and Scotland (2002)*
- *Surrey Hills AONB Management Plan (2014-2019)*
- *South Downs National Park Background Paper on Landscape (September 2017)*

## Appendix D Glossary

AONB	Area of Outstanding Natural Beauty
Assart	A piece of land cleared of trees and bushes in preparation for cultivation
BOA	Biodiversity Opportunity Area
BAP	Biodiversity Action Plan
Copse	An area of closely planted trees
EIA	Environmental Impact Assessment
GLVIA	Guidelines for Landscape and Visual Impact Assessment (Landscape Institute/IEMA, 2013)
HE	Historic England
Ladder fields	Fields with long wavy-edged parallel boundaries that often run for several kilometres over chalk uplands
LCA	Landscape Character Area
LCT	Landscape Character Type
LDF	Local Development Framework
NDP	Neighbourhood Development Plan
PRoW	Public Right of Way
SAC	Special Area of Conservation
SANG	Suitable Alternative Natural Greenspace
SM	Scheduled Monument
SINC	Site of Importance for Nature Conservation
SPA	Special Protection Area
SPD	Supplementary Planning Document
SSSI	Site of Special Scientific Interest
VDS	Village Design Statement