



# THE EAST HAMPSHIRE LOCAL PLAN 2021-2040

**It is important that we have an up to date Local Plan.**

This consultation is another step towards achieving that.

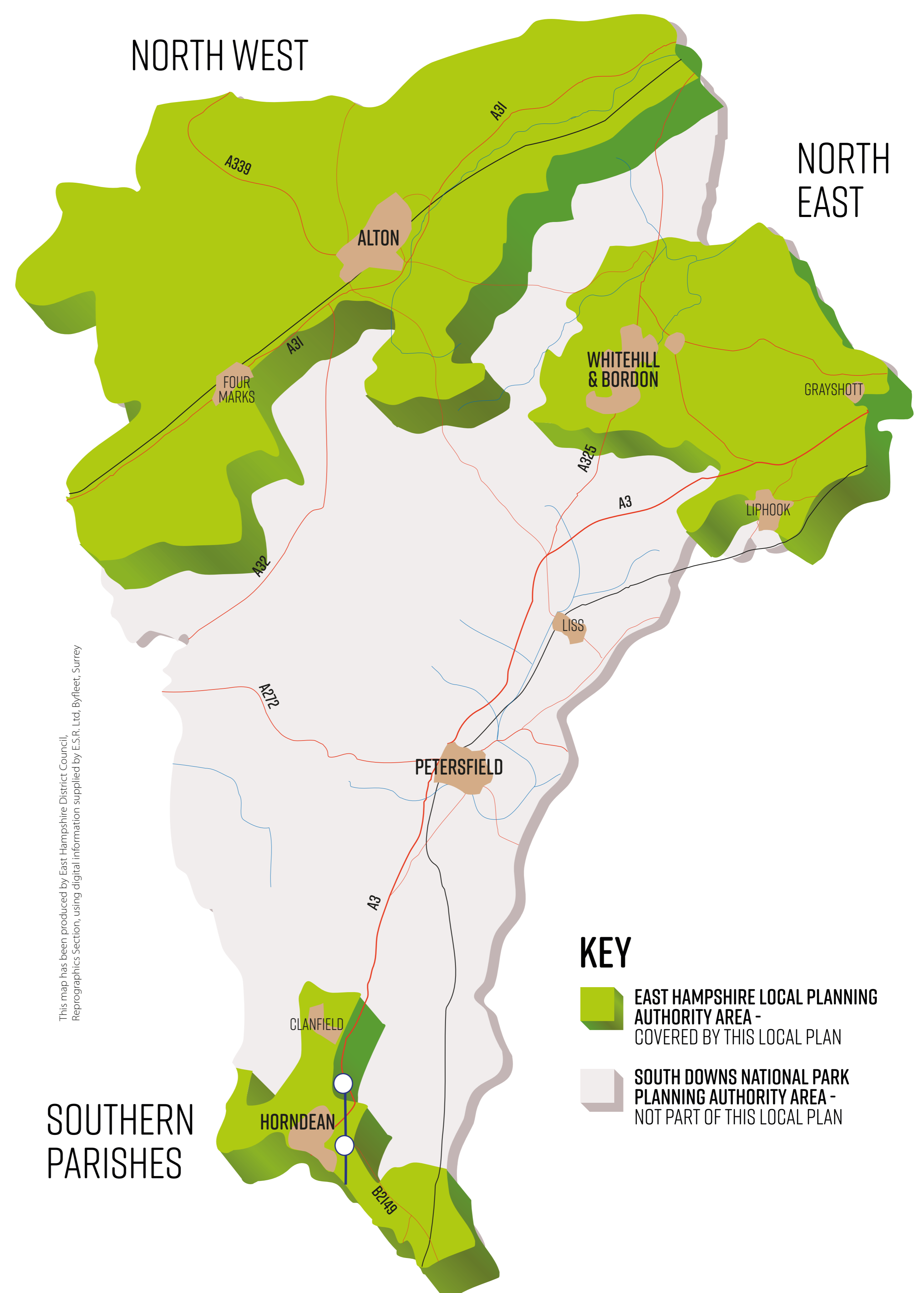
The East Hampshire Local Plan covers the area in East Hampshire outside the South Downs National Park.

The Local Plan includes a vision for the district and aims to meet development needs in a sustainable way. It will plan for new homes, jobs and supporting infrastructure in East Hampshire until 2040.

The Local Plan has an important role in tackling the climate emergency and protecting our environment.

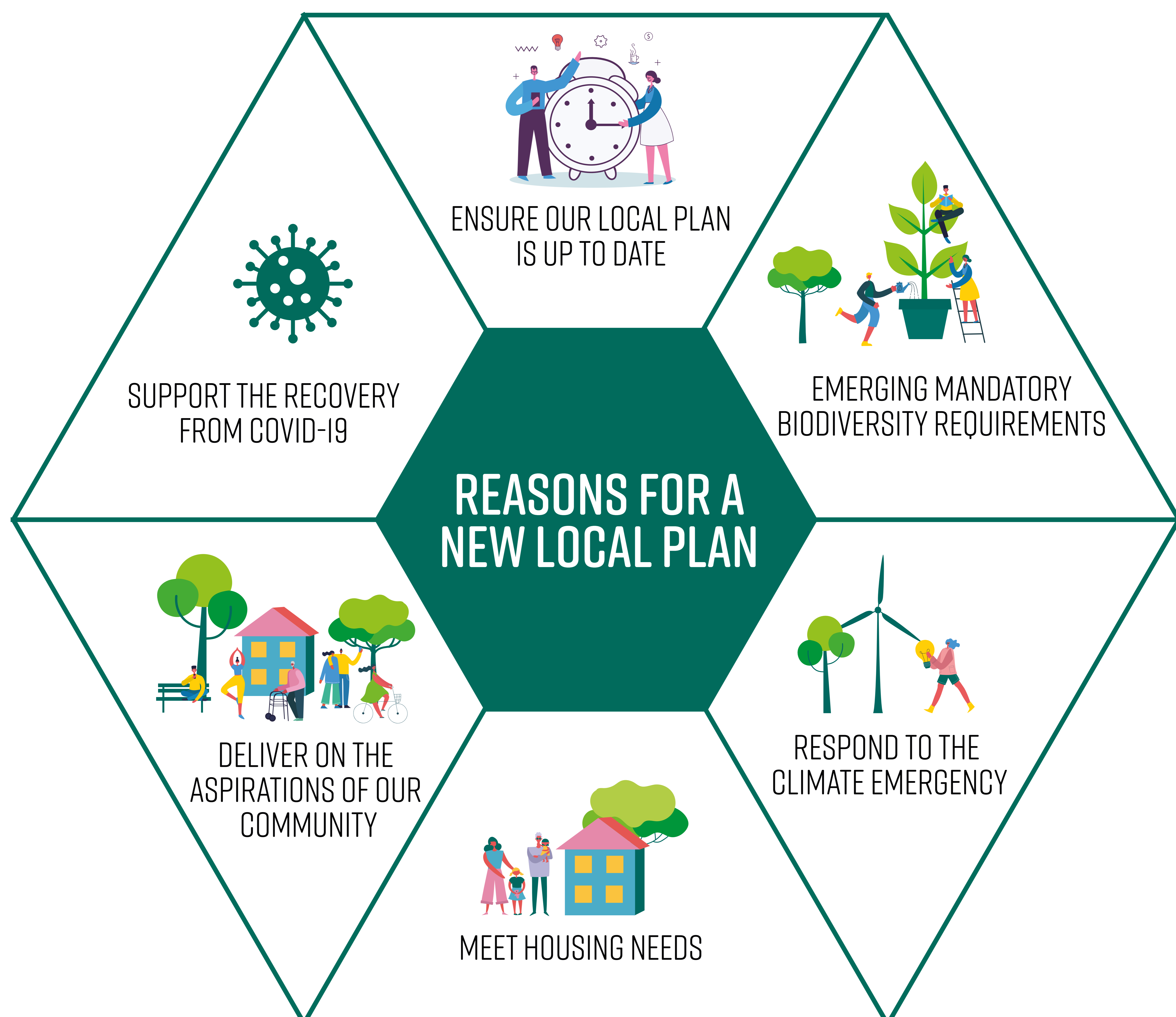
It will do all this by deciding how best to distribute new housing and supporting infrastructure across the district and by setting out policies to guide new developments.

We want the best quality homes to be built, creating better places in the most sustainable way.



*better homes • better places*  
**EAST HAMPSHIRE LOCAL PLAN 2021-2040**





# WHAT IS THE PURPOSE OF THIS CONSULTATION?

**A lot has changed since we last consulted on the Local Plan in 2019.**

You have already shared lots of information and opinions with us. That remains part of the preparation of this Local Plan and is not lost.

We are returning to the early stages of preparing a new Local Plan to look afresh at key issues and priorities.

This consultation includes a proposed vision, and then focuses on the following issues and priorities:

- Climate emergency
- Population and housing
- Types of housing needs
- Environment
- Infrastructure

The consultation also considers possible options for how new homes could be distributed in the district.

**This consultation does not propose planning policies or development sites.**

The feedback you give us now will help us decide where new development should be located and what type of policies we need to include in the Local Plan.

**This is an important process, and a key part is hearing your views. We can't do it without you.**

*better homes • better places*  
**EAST HAMPSHIRE LOCAL PLAN 2021-2040**





# VISION

The proposed vision

**By 2040, our residents will live in healthy, accessible and inclusive communities, where quality homes, local facilities and employment opportunities provide our communities with green and welcoming places to live, work and play and respond positively to the climate emergency.**

Let us know that you think of this vision.

Does it include the key matters of importance?







# THE CLIMATE EMERGENCY

Reducing our impact on the planet is one of the most important challenges we face and the Local Plan has an important role to play in this.

New developments will need to be resilient to climatic changes, such as more rain, heatwaves and rising temperatures.

Our policies must limit the damage developments do to the environment. Energy-efficient homes that use renewable energy and recycled building materials are all possible solutions.

We want all new homes built through this Local Plan to be zero-carbon – but what should that mean and how could it be done?

Should we be thinking in terms of living locally - where people can easily walk or cycle to shops, school or work?



*better homes • better places*  
EAST HAMPSHIRE LOCAL PLAN 2021-2040

An illustration at the top of the footer shows a diverse group of people: a person sitting on the ground, a person doing yoga, a person walking with a shopping cart, a person using a walker, a person sitting on a bench, and a person on a bicycle. There are also several trees interspersed among the figures.





# POPULATION AND HOUSING

**Meeting Government-set housing targets is a central objective for all Local Plans.**

Currently the Government expects East Hampshire (district-wide) to deliver 632 new homes every year until 2040 and most of these will be built in areas outside the South Downs National Park, equivalent to 517 new homes each year.

Although this amounts to 9,823 homes in total, some developments have either been completed, have planning permission already, are an existing allocation or form part of a windfall allowance.

Taking these into account leaves a minimum of 3,405 new homes to be planned for through this Local Plan, up to 2040.

**Should we look further at how housing need is calculated?**

**How should we deal with unmet housing needs from other areas?**



*better homes • better places*  
**EAST HAMPSHIRE LOCAL PLAN 2021-2040**





# TYPES OF HOUSING NEEDS

## Ageing population

Our communities are changing, in particular, they are getting older. We need to understand what this means for the types of homes we will need in the future.

According to 2021 Census around 126,000 people now live in East Hampshire and a quarter are over 65. By 2040, that proportion is expected to be over 40%.

This also means the number of people living in the district with dementia or mobility issues is also going to rise.

**How do we plan to have more homes for older people? How can homes be designed for people with long-term health problems?**

## Affordable housing

Analysis shows that East Hampshire is very short of affordable housing.

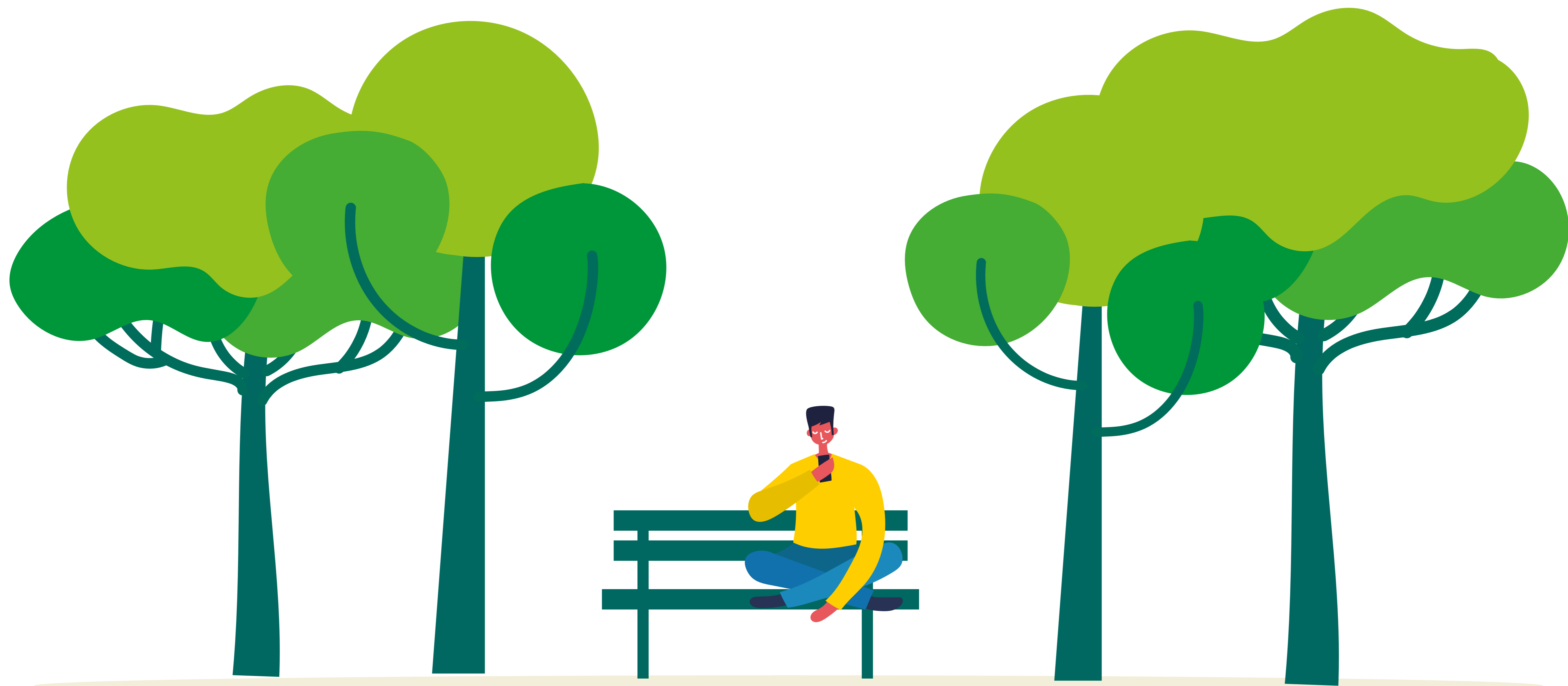
To meet the current need nearly every new home built in the district would need to be affordable – that cannot realistically be achieved.

**Currently we say 40% of new homes on qualifying sites should be affordable homes – should that figure be increased?**



*better homes • better places*  
**EAST HAMPSHIRE LOCAL PLAN 2021-2040**





# ENVIRONMENT

East Hampshire is renowned for its attractive and diverse landscapes, including protected sites which are home to rare species, such as the Dartford Warbler and Bechstein bats.

More than half the district also falls within the South Downs National Park.

Conserving and enhancing this environment is a key priority for us.

Emerging laws stipulate that we must improve biodiversity in the district by 10%. This will benefit people as well as nature and reduce a development's impact on the environment.



As part of the new Local Plan, existing landscape features will be a priority in any decision making.

Green infrastructure - networks of green spaces such as parks, footpaths and gardens - helps to improve biodiversity, boost mental and physical health and helps make areas more appealing.







# INFRASTRUCTURE

**When planning for our district's future we must consider the infrastructure needed to support new developments.**

This can mean public transport, footpaths, internet access, green spaces, schools and sports facilities.

In previous consultations you told us that existing infrastructure, particularly roads and water supply, are already under pressure.

To help with this we are writing an Infrastructure Plan to run alongside the Local Plan, that will identify what infrastructure is needed, how it will be delivered and by whom.

Money from development is available for infrastructure.

Since 2016, about £10.5m has been paid towards infrastructure projects by developers through the Community Infrastructure Levy (CIL).

So far, over £4m of this has been allocated to infrastructure projects with more to come, and £1.5m passed to parish and town councils to spend.



*better homes • better places*  
**EAST HAMPSHIRE LOCAL PLAN 2021-2040**





# DEVELOPMENT STRATEGY AND SPATIAL DISTRIBUTION

**This Local Plan needs to find locations for at least 3,405 new homes by 2040.**

In this consultation, we are not asking you exactly where new homes should be built. Instead, we are asking you about the principles we should use to help make those decisions.

The next consultation will include sites for where development could go.

Now we have taken a fresh look at issues such as the climate emergency and the amount and type of housing we'll need, which may change how we distribute homes.

We have prepared four possible options of how we could distribute new homes.

**Option 1** Disperse new development to a wider range of settlements

**Option 2** Concentrate new development in the largest settlements

**Option 3** Distribute new development by population

**Option 4** Concentrate development in a new settlement

**Tell us what you think, and if there is an alternative.**

*better homes • better places*  
**EAST HAMPSHIRE LOCAL PLAN 2021-2040**

An illustration at the bottom of the page shows a diverse group of people engaged in various activities: a person sitting on the ground, a person in a yoga pose, a person walking a dog, a person pushing a shopping cart, a person using a walker, a person sitting on a bench, and a person riding a bicycle. There are also trees and a small house in the background.





# WE WANT TO HEAR FROM YOU

**We can't prepare the Local Plan without you.**

Read more and send us your thoughts online.

It's easy to use and available 24/7 until 16 January 2023 so you can respond in your own time.

Visit:

[easthants.gov.uk/lp-consultation](https://easthants.gov.uk/lp-consultation)

*Scan this with your phone!*



## Next steps

We will review the responses and consult with you again next year.



*better homes • better places*  
**EAST HAMPSHIRE LOCAL PLAN 2021-2040**