

East Hampshire District Local Plan 2021-2040 (Regulation18)

Statement of Common Ground between

East Hampshire District Council and

Basingstoke and Deane Borough Council

January 2024



Basingstoke
and Deane

Version

Table 1: Editions of this document

Version	Date	Note
Version 0.1	24 November 2023	First draft (EHDC)
Version 0.2	12 December 2023	BDBC amends
Version 0.3	19 December 2023	EHDC accepted amends and signed
Version 0.4	11 January 2024	BDBC signed

1. Introduction

- 1.1. This Statement of Common Ground (the Statement) has been prepared by East Hampshire District Council (EHDC) and Basingstoke and Deane Borough Council (BDBC) (the parties) to support the East Hampshire Local Plan 2021-2040.
- 1.2. This Statement ensures the requirements set out in the National Planning Policy Framework (NPPF) have been met. The NPPF states: '*Local planning authorities are under a duty to cooperate with each other, and with other prescribed bodies, on strategic matters that cross administrative boundaries.*'¹ The purpose of the Statement is to document the strategic matters being considered and the progress made in cooperating to address them at this stage of the plan making process. It focusses on areas where there is agreement, and if appropriate those matters where work is ongoing to resolve differences. The Statement is intended to be 'live', updated as circumstances change, and agreement occurs on any outstanding issues. The Statement also forms part of the evidence to demonstrate compliance with the Duty to Cooperate during the preparation of the East Hampshire Local Plan 2021-2040.

2. Parties and signatories involved

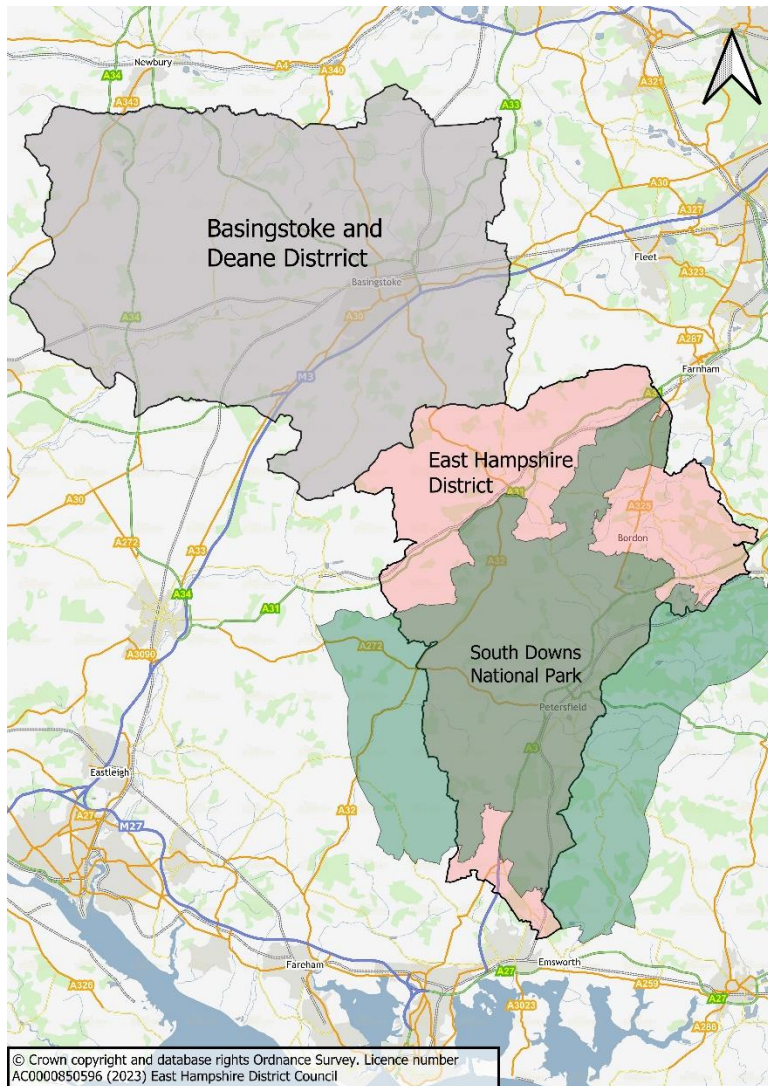
- 2.1. East Hampshire District Council. On behalf of East Hampshire District Council – Portfolio Holder for Regulation and Enforcement, Cllr Angela Glass.
- 2.2. Basingstoke and Deane Borough Council. On behalf of Basingstoke and Deane Borough Council – Portfolio Holder for Strategic Planning and Infrastructure, Cllr Konieczko.

3. Relationship with other documents

- 3.1. Where appropriate East Hampshire District Council has prepared separate Statements with other duty to cooperate prescribed bodies. All Statements will be published on East Hampshire District Council's [website](#).
- 3.2. Unless otherwise stated, all evidence documents referred to in this Statement have been published on East Hampshire District Council's [website](#).

¹ Paragraph 24, NPPF (2023)

4. Strategic Geography



4.1. The western side of East Hampshire's northern boundary adjoins the boundary of Basingstoke and Deane borough. The boundary is a rural area with limited development. Lasham Airfield is close to the boundary, on the southern side in East Hampshire district. Basingstoke is approximately 7 miles north of the boundary via the A339.

4.2. Both administrative areas are within Hampshire County.

5. The Development Plan and emerging planning documents

- 5.1. At the time of signing of this Statement of Common Ground;
- 5.2. East Hampshire District Council is preparing to consult on a draft Local Plan 2021-2040, Reg.18 stage. Consultation is scheduled to start on 22 January 2024 for 6 weeks, in line with the [Local Development Scheme 2023](#). The existing Development Plan is the Joint Core Strategy 2014, The Local Plan (Part 2): Housing and Employment Allocations 2016, and the saved policies of the Local Plan Second Review 2006. When adopted, the new Local Plan will replace the current these documents.
- 5.3. In Basingstoke and Deane, the Local Plan 2011 to 2029 is the Development Plan, adopted in 2016. Basingstoke and Deane Borough Council is producing a new Local Plan and is preparing to consult on a draft Local Plan (2021-2040) for Regulation 18 consultation in January 2024. Consultation is scheduled to start on 22 January 2024 for 6 weeks, in line with the [Local Development Scheme 2023](#). When adopted, the new Local plan will replace the current Development Plan.

6. Identified Strategic Matters

- 6.1. As documented in the East Hampshire [Duty to Co-operate Framework 2022](#), the strategic cross boundary matters concerning the two authorities are:
- Meeting identified housing needs within the District and wider unmet housing needs
 - Meeting the identified need for Gypsy, Traveller and Travelling Showpeople accommodation within the District and wider unmet needs
 - Consideration of the potential need for transit accommodation for Travellers (with regards to travelling routes across districts/boroughs).
 - Supporting economic growth and opportunity, creating the conditions in which businesses can invest, expand and adapt
 - Responding to Climate Emergency
 - Achieving nutrient neutrality - the potential impacts of development on water quality in the Solent.
- 6.2. As documented in the Duty to Co-operate Framework 2022, the two authorities have been conversing on matters related to the preparation of the East Hampshire District Local Plan since its early stages.
- 6.3. The following agreements and detail of further work are as at a point in time and will be updated during the preparation of the East Hampshire District Local Plan. The date of this document is the latest date listed in Table 1: Editions.

7. Record of Agreement

7.1. East Hampshire District Council and Basingstoke and Deane Borough Council agree the following:

Table 2: In Agreement

<p>The EHDC Duty to Co-operate Framework identifies the strategic cross boundary issues which the Local Plan is likely to reflect (and how they have come about). These are the issues on which there has been and continues to be engagement with other councils and bodies as part of the Duty to Co-operate. This ensures all the strategic issues which affect the Local Planning Authority (LPA) Area and wider area are identified at the earliest stage of plan preparation.</p>
<p>There is no unplanned housing need arising from Basingstoke and Deane Borough on which it is seeking assistance from East Hampshire District Council.</p> <p>There is no unplanned housing need arising from East Hampshire District on which it is seeking assistance from Basingstoke and Dean Borough Council.</p>
<p>At present, there is no unplanned need for Traveller accommodation² arising from Basingstoke and Deane Borough on which it is seeking assistance from East Hampshire District Council. However, Basingstoke and Deane Borough Council is currently updating its Gypsy and Traveller Accommodation Assessment (GTAA) and will relook at needs and strategy to meet needs in its forthcoming Local Plan consultation.</p>
<p>There is likely unmet need for traveller accommodation arising from the East Hampshire District Local Plan 2021-2040. East Hampshire District Council asked Basingstoke and Deane Borough Council for assistance with meeting this need (August 2023).</p> <p>Basingstoke and Deane Borough Council is likely to find itself in a similar situation and will likely also find it challenging to meet needs, and as such cannot assist at present with helping to meet any unmet needs from East Hampshire district.</p>
<p>The East Hampshire GTAA 2020 states, “it is not recommended that there is a need for a formal public transit site in East Hampshire at this time” and carries on by recommending monitoring of this situation, and establishing an evidence base.</p> <p>Both authorities continue to keep such records of incidents of unauthorised encampments, and will review them collectively as part of a future update of the GTAA.</p>
<p>EHDC declared a climate emergency in July 2029 and adopted a climate and environment strategy in 2020 which is currently being refreshed. BDBC declared a climate emergency in September 2019 and adopted a climate change and air quality strategy in 2021.</p> <p>Both authorities will continue to engage and co-operate to meet respective targets.</p>
<p>Where new development increases the amount of nutrients entering Solent European Sites. Natural England has advised that there is a likely significant effect on several of the Solent’s European Sites from development. Therefore, any new housing schemes and other proposals which are within the River Itchen catchment and include a net gain in overnight accommodation or development which has a high volume of water use will need to prevent</p>

² Traveller accommodation including Gypsy and Traveller pitches and Travelling Showpeople plots

any increase in nutrients into the Solent European Sites in order for them to 'nutrient neutral'.

Both authorities are continuing to work with PfSH through the Water Quality Working Group to coordinate a Solent wide solution in the medium to long term.

8. Record of Further Work

8.1. Table 3 identifies further work for both councils, which may result in additional areas of agreement.

Table 3: Further / future work

Basingstoke and Deane Borough Council will work with East Hampshire District Council and other councils to discuss wider unmet needs for Traveller accommodation but needs to understand through those discussions the evidence for cross boundary links.

Basingstoke and Deane Borough Council will work with East Hampshire District Council and other councils to tackle climate change and share best practice.

Basingstoke and Deane Borough Council will work with East Hampshire District Council and other councils to co-ordinate a Solent wide solution to nitrate mitigation.

9. Governance arrangements

9.1. In terms of governance arrangements, the two parties agree to:

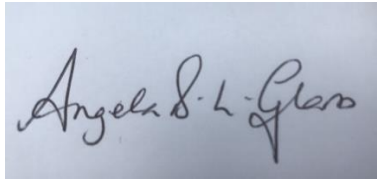
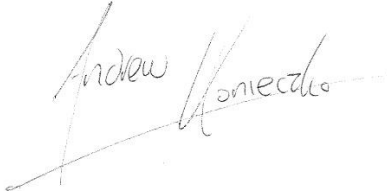
- Keep a dialogue open on matters arising which are likely to have significant impacts and implications for the delivery of local plan policies
- To work together to achieve identified outcomes in relation to strategic matters
- To review and update this Statement in light of any material change in circumstance and
- To maintain positive principles of cooperation

10. Timetable for agreement, review and updating

- This statement has been informed by ongoing engagement between the two parties and the parties will continue to work together to address identified strategic matters. This Statement is intended to be a living document that can be reviewed and updated, informed by continued communication between the parties through meetings, statutory consultation at key plan making stages and electronic communication.

11. Signatories

- We confirm that the information in this Statement reflects the joint working to address identified strategic matters that has been undertaken between East Hampshire District Council and Basingstoke and Deane Borough Council. The parties will continue to work together to address cross boundary issues.

Signed:	Signed:
	
Name: Cllr Angel Glass	Name: Cllr Konieczko
Position: Portfolio Holder for Regulation and Enforcement	Position: Portfolio Holder for Strategic Planning and Infrastructure
East Hampshire District Council	Basingstoke and Deane Borough Council
Date: 19/12/2023	Date: 11/01/2024