



Bramshott and Liphook Neighbourhood Development Plan 2020 to 2040

Consultation Statement
February 2024



Prepared by the Bramshott & Liphook Neighbourhood Plan
Steering Group on behalf of Bramshott & Liphook Parish
Council



Contents

| | | |
|---|--|-----------|
| 1 | Introduction | 3 |
| 2 | Summary of engagement and consultation activities, issues and outcomes | 4 |
| | Stage I: Setting up the Steering Group and engaging the local community to understand main issues – 2015 to 2017 | 5 |
| | Stage II: Developing a Vision, objectives and planning policies – 2018 to 2019 | 7 |
| | Stage III: Story of the sites and refining the policies – 2020 to 2022 | 13 |
| | Stage IV: Engagement with the draft plan – 2023 | 18 |
| | Stage V: Submission Version Neighbourhood Development Plan – 2024 | 24 |
| 3 | Conclusion..... | 25 |
| | Appendix A: Stakeholders contacted at the Regulation 14 consultation | 26 |
| 4 | Appendix B - Comments received at Pre-Submission (Regulation 14) Consultation and proposed responses from the Steering Group | 29 |

1 INTRODUCTION

- 1.1. The policies contained in the Bramshott and Liphook Neighbourhood Development Plan (BLNDP) have been developed following extensive interaction and consultation with the community and businesses within the area.
- 1.2. This Consultation Statement sets out the story of how the Neighbourhood Development Plan has been developed and, in accordance with Regulation 14 of Neighbourhood Planning Regulations 2012:
 - details of the persons and bodies who were consulted about the proposed neighbourhood development plan;
 - how they were consulted;
 - a summary of the main issues and concerns raised by the persons consulted; and
 - how these issues and concerns have been considered and, where relevant, addressed in the proposed Neighbourhood Plan.

The Bramshott & Liphook Neighbourhood Plan Steering Group

- 1.3. Bramshott & Liphook Parish Council is the qualifying body officially responsible for the Neighbourhood Plan. A Steering Group, comprising local councillors and volunteers from the community, was set up to lead on the development of the BLNDP. Beneath this, a series of Working Groups exploring specific topics were set up, each reporting in to the Steering Group.

2 SUMMARY OF ENGAGEMENT AND CONSULTATION ACTIVITIES, ISSUES AND OUTCOMES

2.1. A high-level summary of the engagement and consultation activity is shown below:

| Date | Milestone | Key activities |
|----------------------------|--|--|
| 2015 | Parish Council decides to prepare a Neighbourhood Development Plan | <ul style="list-style-type: none"> • Neighbourhood Area is designated |
| 2017 2018 | Community engagement and evidence gathering | <ul style="list-style-type: none"> • Steering Group established • Working Groups established • Community surveys • Community Visioning & Design Forum • Bramshott & Liphook NDP Interim Report |
| 2019 to 2022 | Formulating draft policies | <ul style="list-style-type: none"> • Public Exhibition to shape policies • Shaping the health outcomes of our plan workshop • Our future environment event |
| 2019 to 2023 | Exploring potential to allocate sites | <ul style="list-style-type: none"> • Call for Site and site assessments • SEA screening options determination • Site Options Assessment • SEA Scoping Report • Site matrix summaries & site summaries • SEA Re-Screen Determination |
| 2023 | Pre-Submission Version (Regulation 14) Plan published | <ul style="list-style-type: none"> • SEA/HRA Screening prepared • ‘Your Parish, Your Views’ informal public consultation • Pre-Submission (Regulation 14) public consultation |
| 2024 | Regulation 16 Plan published Examination Referendum | <ul style="list-style-type: none"> • Plan amended appropriately into Submission Version and submitted, with supporting documents to EHDC • Regulation 16 consultation run by EHDC • Plan independently examined • Plan to be finalised for Referendum • Plan to be ‘made’ |

2.2. The sections below describe, in fuller detail, the engagement and consultation process which took place during the Plan preparation. This is divided into five stages:

Stage I: Setting up the Steering Group and engaging the local community to understand main issues – 2015 to 2017

Stage II: Developing a Vision, objectives and planning policies – 2018 to 2019

Stage III: Story of the sites and refining the policies – 2020 to 2022

Stage IV: Engagement with the draft plan – 2023

Stage V: Submission Version Neighbourhood Development Plan – 2024

Stage I: Setting up the Steering Group and engaging the local community to understand main issues – 2015 to 2017

- 2.3. Bramshott & Liphook Parish Council agreed to begin the process of a NDP in November 2014. In **July 2015 the forms were submitted to define the Parish Boundary**, and the designation was granted in October 2015.
- 2.4. A **Visioning Activity** was held on 14 June 2017. Over 60 representatives of local groups and businesses attended a task-based event to look at issues affecting the Parish and what is special about the Parish. This was facilitated by independent consultants Feria Urbanism. A 35-page report was produced by Feria, and certain common themes for challenges included:
- Housing development
 - Concerns about loss of identity for Liphook as it grows
 - Traffic congestion in and around the village centre
 - Narrow pavements

The summary also highlighted positive points about living in Liphook such as people feeling generally safe in and around the village, and plenty of green, open spaces nearby. The full report can be found on the BLNDP website: <https://bramshottandliphookndp.uk/wp-content/uploads/2023/12/2017-07-Visioning-Event-Report.pdf>



Figure 1 July 2017 Visioning Event

- 2.5. The **first Steering Group meeting** was held on 27 July 2017, with twelve Steering Group members attending and Emma Winfield as Chair. Representatives from Feria attended this meeting.
- 2.6. Following the Visioning Event, the Steering Group along with the appointed consultant Feria Urbanism ran a two-day **Design Forum** on Wednesday 1 November and Thursday 2 November 2017. This was followed by a third day on Tuesday 28 November 2017 at the Liphook Millennium Centre.

- 2.7. Representatives from Feria attended the Steering Group meeting on 9 January 2018 to feed back on the Design Forum. They introduced the 7 key themes that had been identified at the Design Forum and 29 individual policies. **Key themes:**

- Access & Movement
- Community
- Sport & Recreation
- Housing
- Heritage & Design
- Public Services
- Employment

- 2.8. At this same meeting the topic of land in the SDNP area of Liphook was discussed; Feria stressed that they did not recommend allocating land in the SDNP area, and if the B&L NDP did decide to allocate land in the SDNP then it will be at considerable risk of failure at examination, and/or would fail to reach referendum if the current circumstances were still applicable.

Stage II: Developing a Vision, objectives and planning policies – 2018 to 2019

- 2.9. Following on from the initial evidence gathering and work from Feria, the Steering Group was in a position to establish a vision and objectives for the BLNDP
- 2.10. **Seven Working Parties were formed in 2018** to conduct research, gather evidence and further community engagement based on each theme. Each Working Group was chaired by a member of the Steering Group, so that progress could be easily fed back to the main Steering Group. At this stage **Chantal Foo** was acting Chair of the Steering Group. In March 2018 Feria released the full report of findings as an interim report which can be found on the BLNDP website: https://bramshottandliphookndp.uk/wp-content/uploads/2018/04/162_Q_180326_Interim-Report_FINAL_pages.pdf

2.11. By this stage the Steering Group had adopted a **communications plan** including:

- i) Mailchimp mailing list
- ii) Website <http://bramshottandliphookndp.uk>
- iii) Facebook page (now inactive in favour of posting through the Parish Council and Liphook Millennium Centre’s official pages)
- iv) Production of flyers and posters for events and recruitment with consistent font and colour branding:

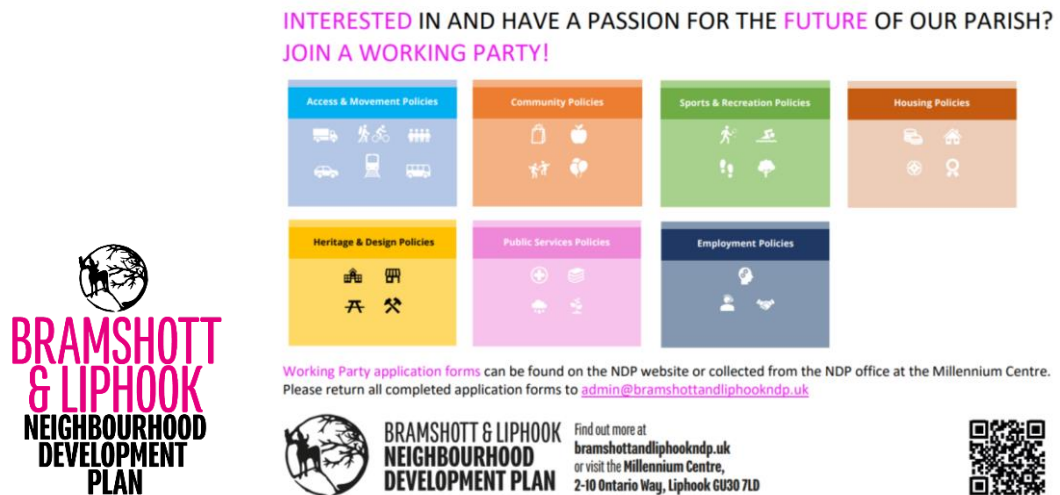


Figure 4: Examples of BLNDP branding

- v) Regular press releases including in the Community Magazine, Liphook Herald & Bramshott Bugle.
- vi) Clear mission statement

MISSION STATEMENT:

‘Listening to the community to deliver a Neighbourhood Development Plan to **enhance the Parish** of Bramshott and Liphook, **both now and into the future.**’

‘All places are either growing or declining. Nothing stays the same.’



‘But a good plan can let you manage change on your terms.’

The B&L NDP covers the **whole Parish of Bramshott & Liphook** and aims to manage change.

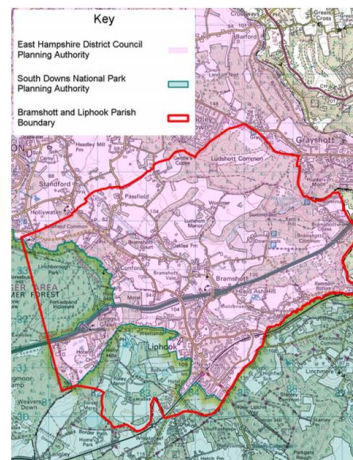


Figure 5: BLNDP’s mission statement, used frequently in presentations

- 2.12. Throughout 2018 the Steering Group and Working Parties continued with community engagement. This included:
- 2.13. Roger Hargreaves of Liss' NDP attended a SG meeting to speak about their neighbouring experience going through the process of an NDP, including keeping up momentum and deciding whether to allocate sites.
- 2.14. Posters to recruit for the working parties in Passfield, Conford, Bramshott and Liphook.
- 2.15. Steering Group members attended **local events**, reaching out to a range of demographics, to raise awareness and recruit to Working Parties:
- Liphook Charity Bike Ride 10 June 2018
 - Bramshott Open Gardens 10 June 2018
 - Classic Car Show 17 June 2018
 - Dylan's Ice cream 10th Birthday 24 June 2018



Figure 6: Display stand for community engagement at Dylan's Ice Cream event

- 2.16. **The Working Parties gave reports on their progress to the Steering Group at the end of 2018.** The following summarises some of the key activities from each one:
- 2.17. **ACCESS AND MOVEMENT WORKING PARTY** key outputs:
- Completed a review of [the Atkins Report](#), a transport feasibility study produced by Atkins on behalf of Hampshire County Council to “better understand the current traffic flows through Liphook focussing on the double mini-roundabouts at the square”, to address (former) Policy AM1 Accommodate, successfully, traffic in a rural environment. Note that policies referred to in this section have been superseded in later iterations of the BLNDP.
 - To address (former) Policy AM2 Promote active travel modes across the Parish: Having reviewed many local maps including the Parish Council's walking maps and HCC's rights of way, and broken the

Parish into segments to walk themselves, the Working Party plotted their own access map. Reviewed signage for cycling and walking routes in Parish, liaised with local cycle and walking groups.

- (Former) Policy AM3 Improve access to Bohunt School: this was widened to all local schools' access, and the Working Party asked each of the schools in Bramshott and Liphook to provide a rough breakdown of the postcodes pupils and students travel from, and their preferred stated mode of transport.

2.18. **COMMUNITY WORKING PARTY:**

- Conducted an audit of retail and community facilities, and an audit of parking spaces. Identified 120 units, of which 12 were for community use, 10 were vacant premises, and 8 provided a range of healthcare. Identified 2 main retail areas (Station Road and the Square) and conducted a SWOT analysis on existing retail units to show unique characteristics of both areas.

2.19. **EMPLOYMENT WORKING PARTY:**

- This Working Party had not managed to recruit any members who weren't already Steering Group members, perhaps due to lack of certainty from the community about value of employment to the Parish, or employees not living in the Parish and not feeling a connection to it.

2.20. **HERITAGE AND DESIGN WORKING PARTY:**

- Utilised evidence from the Village Design Statement and Parish Plan. Conducted own inspections of local street furniture, signage and road layouts.

2.21. **HOUSING WORKING PARTY:**

- Data gathering took place checking on the NPPF, SDNPA and EHDC Affordable Housing Policies.

2.22. **PUBLIC SERVICES WORKING PARTY:**

- The Public Services Working Party reached out to all relevant service providers and collected an evidence base of replies, including from both local surgeries.

2.23. **SPORTS AND RECREATION WORKING PARTY:**

- Conducted research into existing facilities including approaching all local sports clubs and Bohunt School. Case study research projects including Radford Park survey, soft play, Bordon BMX track and Boule.

2.24. A **Public Exhibition** was held on the following dates at the Liphook Millennium Centre:

Friday 15 February 2019: 10am – 4.30pm

Saturday 16 February 2019: 9.30am – 2pm

The dates and times were chosen to follow the release of EHDC's Draft Local Plan, and to allow attendance of schools, parents prior and post drop-off/pick-up, and those who work outside of the Parish to visit on the Saturday. Advertisement was through banners around the Parish, A3 posters, Mailchimp notifications and a press release in the Liphook Herald and Bramshott Bugle. This was a

drop-in event with presentations given throughout the day and tables for each Working Party to display their policies. The feedback collated at this event helped to further shape the NDP policies.



Figure 7: Promotional poster for the drop in events

2.25. **Outcomes**

FEEDBACK ANALYSIS:

- 261 attendees (of which 8 stated they were developers);
- Feedback forms completed at event = 236;
- Feedback online = approx. 30 comments;

Total comments made for each Policy Theme = separating each feedback form into individual comments

| | |
|---------------------|-----|
| Access & Movement | 111 |
| Community | 22 |
| Employment | 12 |
| Heritage & Design | 59 |
| Housing | 135 |
| Public Services | 28 |
| Sports & Recreation | 65 |

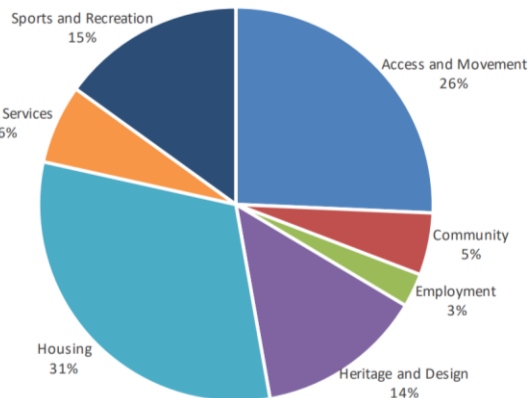


Figure 8: Feedback analysis from the Public Exhibition events, showing Housing and Access and Movement as the most popular topics

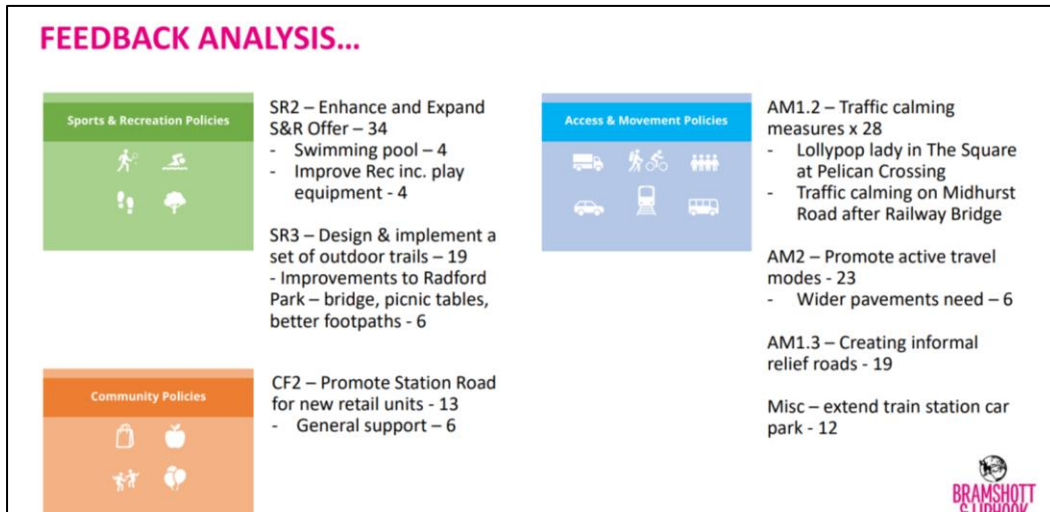


Figure 9: Feedback analysis from the Public events, showing residents' priorities

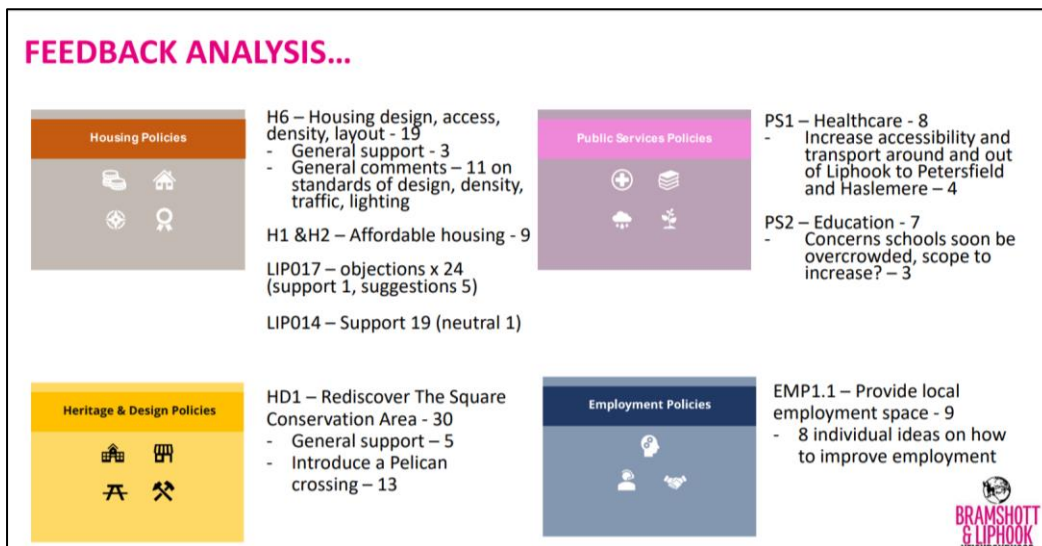


Figure 10: Feedback analysis from the Public events, showing residents' priorities



Figure 11 Photo taken during Public Exhibition 2019

2.26. The full feedback comments on each policy can be found on the Parish Council website.

Stage III: Story of the sites and refining the policies – 2020 to 2022

2.27. In August 2019, EHDC determined that a **Strategic Environmental Assessment (SEA) and a Housing Requirements Assessment (HRA) would be required to support the BLNDP**, followed by consultation with statutory consultation bodies the Environment Agency, Historic England and Natural England. As part of the SEA, BLNDP would also conduct a Call for Sites.

2.28. The **Call for Sites ran for 4 weeks from 10th September to 10th October 2019**. The promotion consisted of two press releases, five updates on the website and social media, and three emails to the list of residents/public/developers who have agreed to be contacted. Updates were also placed on Liphook Talkback online forum. Forms were available on the website, or hard copies from the Parish Council. 18 responses were received and logged.



Figure 12: Example of a Call for Sites poster in the Parish – in Midhurst Road Car park, this noticeboard was repaired and cleaned by Working Party members

2.29. **Consultancy firm AECOM were appointed to carry out the SEA, HRA and a Site Assessment assistant package**. The Site Assessment package was an independent report, analysing and making recommendations of the most suitable sites based on a set criterion. It considered all the sites the NDP received, as well as EHDC and SDNP's own Call for Sites and used the BLNDP's feedback from public consultations. With this report finalised on 28 April 2020 (the report can be found here: <https://bramshottandliphookndp.uk/wp->

[content/uploads/2019/04/200731-Bramshott-and-Liphook-Neighbourhood-Plan-Site-Assessment-Final-Report-amended.pdf](https://www.bramshottandliphookndp.uk/wp-content/uploads/2019/04/200731-Bramshott-and-Liphook-Neighbourhood-Plan-Site-Assessment-Final-Report-amended.pdf)), the Steering Group decided to pursue the idea of **allocating sites for the Parish** and began forming its own Matrix for assessment.

- 2.30. In January 2020, SG member **Louise Bevan** gave a presentation and held an exercise on **Health & Wellbeing** with the Steering Group, drawing on a public health review of impact of [Spatial Planning for Health](#) with the aim for this to be integrated into each key theme of the plan. By subsequently working with each Working Party, the key themes were formed into a coherent set of chapters all in the same format.
- 2.31. **The work of the BLNDP was halted in March 2020 due to the Coronavirus pandemic.** Steering Group meetings were put on hold for several months, with the first remote meeting being held July 2020. There was acknowledgement that the pandemic was changing Parish priorities and peoples needs, and the NDP would need to evaluate this with additional information gathering.
- 2.32. **Following a dip in 2020, there was a recruitment drive for new Steering Group members** in early 2021. Adverts were placed on the NDP website, in the Liphook Community Magazine, Bramshott Bugle, and posters throughout the Parish, and five new Steering Group members were introduced in the following few months.
- 2.33. Throughout 2020 and 2021 the Steering Group continued working with AECOM on the SEA, HNA and Site Assessment Matrix. The full matrix assessment draft was published in December 2021 and Steering Group members began conducting Site Summaries for the sites put forward. The matrix can be found here: <https://www.bramshottandliphookndp.uk/wp-content/uploads/2019/04/Site-Assessment-Matrix-2021-12-30-Issued-RevA-FULL.pdf>. **Kevin Wyeth** took over as Chair in the same month.
- 2.34. In 2022, following a period of lower community engagement, **a new Communication Strategy** was introduced to revive interest after the Covid pandemic:
- 1,800-word article in the Liphook Herald about status of the NDP
 - Approaching Bohunt School
 - Engagement on Facebook discussions to re-assure community that NDP is progressing
- 2.35. **Meetings were held with local interest groups throughout June** to gain an understanding of public views to specific sites in Bramshott & Liphook: South East Liphook, Penally Farm and Passfield. There was high attendance (circa 80, 40 and 40 attendees respectively). Residents made their comments on early draft Site Summaries expressing mainly opposition to the sites that were of interest to them and identifying many site constraints. These were primarily about access, traffic and other infrastructure. Presentation slides can all be found here: <https://www.bramshottandliphookndp.uk/welcome/keyevents/documents/>

- 2.36. Follow up meetings were held in January 2023 (with Louise Bevan as Chair) with representatives from resident's groups who were opposed to specific sites to ensure all views were captured and input into the final Site Summaries that had been updated to assess the benefits and challenges of the site in terms of delivering NDP policies, highlighting constraints and possible mitigation. An example of one of the Site Summaries can be found here: <https://bramshottandliphookndp.uk/wp-content/uploads/2024/01/BL15-2023-01-21-Land-at-Passfield.pdf>



Figure 13: Notes from the South East Liphook residents meeting

- 2.37. A 'Traffic in Liphook' meeting was also held with around 40 attendees. There was a high level of concern about traffic issues particularly in The Square, and the NDP SG presented an analysis of the possible solutions proposed by HCC's Liphook Phase II Transport Feasibility Study (The Atkins Report). All solutions were demonstrated to be problematic. The full presentation and notes can be found here: <https://bramshottandliphookndp.uk/wp-content/uploads/2019/04/Liphook-Traffic-presentation-slides.pdf>
- 2.38. Traffic and transport was the area most often raised during residents consultation. It was noted that strategic transport issues largely fall outside the scope of the neighbourhood plan.
- 2.39. In February 2023 the SG decided to focus on robust policies rather than site allocation. Policies were developed specifically to address traffic and transport issues (within the remit of an NDP) which ever sites are developed. Policies BL1 (Location of Development) introduced the 10-minute walkable neighbourhood concept. BL10 (Improving walking, cycling and equestrian opportunities) and BL11 (Mitigating vehicular impacts at junctions and pinchpoints) were also developed. These sought to address traffic and transport issues by promoting active travel and preventing additional pressure on The Square/school drop-off areas.

- 2.40. In June 2022, **Alison Eardley** was appointed as an independent Planning Consultant to consolidate the NDP document into a report format and produce maps to illustrate the policies using GIS. In August 2022 **AECOM** were commissioned to provide design support for the consolidated policies (B&L Design Code).
- 2.41. On 21 September 2022 Louise Bevan SG member chaired the **‘Our Future Environment’** event, which took place at the Liphook Millennium Centre. This event was held in order to proofcheck the NDP policies in relation to climate and environment, in response to the climate emergency, targets to achieve zero and discussions happening at county and district levels. In total, 20 people attended and workshops were held on:
- Green space and biodiversity
 - Housing and neighbourhood design
 - Community energy
 - Access and movement
- 2.42. Experts from Energise South Downs (ESD), Petersfield Climate Action Network (PECAN) and Transport Planners from Hampshire County Council Transport Team attended to help run and support the workshops.
- 2.43. Feedback forms were filled in by residents attending, and each workshop facilitator also gave a feedback form with reflections to the Steering Group. This was fed back to Alison at a policies workshop in November and as well as embedding into existing policies a new policy was introduced – BL4 Climate Change and Design.

| | |
|---|---|
| Q1: How to you usually access the greenspaces How far are you willing to travel? | <p>Foot - 1km with kids</p> <p>Walking around village & countryside</p> <p>Car – 3 miles</p> <p>Walk or on bike</p> <p>I also view our beautiful surrounding landscape</p> <p>Not far; there is no need to travel far, our countryside comes up to our backdoors</p> |
| Q2: What concerns do you have about existing green spaces. | <p>Increasing usage, Leaving</p> <p>They’re being lost, they aren’t biodiverse enough and they aren’t offering communal wellbeing projects</p> <p>Need enhancing for active biodiversity (include school / kids)</p> <p>We do not want our protected open areas and landscape eroded by badly planned development</p> |
| Q3: Where do you think new green spaces or sports facilities should be located? | <p>Accessible form town centre & cycle paths</p> <p>Wherever any small or large parts are</p> <p>Sports – have enough</p> <p>- Boxing hall</p> |

| | |
|---|--|
| | <p>Green – inside new housing</p> <p>No need for new green space, new football field on ground to west of silent gardens</p> |
| <p>Q4: How can new developments improve biodiversity?</p> | <p>Wildlife corridors, wild areas, wildlife friendly, sustainable building materials</p> <p>Enlarge the buffer zone, leave wildlife alone. Add more, rewild</p> <p>Designated protected areas to not build on. Start CSA (community supported agriculture movement to grow food for the whole community)</p> <p>By in building animal paths, bird boxes – hedges rather than fencing</p> <p>Often achievable by comparatively small even tiny nature areas within a large development. And protect existing nature corridors, with hedgerows</p> |

Figure 14: Example of questions and answers from the Green Space and Biodiversity workshop

2.44. In September 2022, **Louise Bevan** took over as Chair of the Steering Group.

2.45. **The decision was taken in February 2023 not to allocate sites in the NDP.** This was because:

- Sites coming forward are strategic in nature and as such any allocation will be through strategic planning steps undertaken by East Hampshire and/or the South Downs National Park planning authorities as part of their emerging Local Plan.
- Once in place BLNDP robust policies and design codes apply to all development regardless of whether they are allocated or not.
- Allocation is a lengthy process; we are better off having an NDP in place sooner rather than later.

2.46. The Steering Group voted in favour of not allocating and going forward with robust policies and a Location of Development policy (BL1) which would guide development proposals. It was agreed that the previous years of work would not be lost but embedded in the policies and the Design Guidance and Codes.

Stage IV: Engagement with the draft plan – 2023

- 2.47. Following the lengthy period of community engagement and the decision not to allocate sites the SG updated the NDP policies to the Informal Draft NDP (Pre-submission). The NDP vision was updated to support this with six ambitions.



Figure 15: The six ambitions making up the overall Plan vision

- 2.48. On 22 and 25 March 2023, the '**Your Parish, Your Views**' informal public consultation presented the updated Vision, Informal Draft NDP and Design Guidance and Codes. This was held at the Liphook Millennium Centre. An evening and a weekend session were chosen to give access to those with daytime commitments. The draft NDP and Design Code were available to read along with summary documents of all six chapters and 21 policies. Steering Group members were on hand to answer questions. Residents took part in map activities to add important views and cycling routes. The feedback was used to further amend the draft NDP.
- 2.49. Banners and posters were displayed around the Parish, flyers were circulated to 6000 residents, press releases went to Vantage Point, Liphook Herald and Haslemere Herald, and flyers were also distributed to local businesses to display. Regular posts were uploaded to Facebook through the Parish Council and Liphook Millennium Centre pages.
- 2.50. **172 people attended the sessions**, and 558 people visited the NDP website during March and April whilst feedback was being accepted. Participants could give feedback either on paper or through an online survey, stating whether they agree/disagree with each of the 21 policies and the overall plan with space to give comments. 257 votes were given on policies as well as three developers and EHDC commenting.



Figure 16: Banner from March 2023 Consultation

Liphook Millenium Centre FB 16. 2.23



Liphook Millenium Centre FB 24.2.23



Liphook Millenium Centre FB 28.2.23



15:35

Liphook Millennium Centre



Liphook Millenium Centre FB 9.3.23



Figure 17: Social media advertisements and photos from March 2023 consultation

2.51. The feedback forms were collated into a findings document, with proposed changes discussed by the Steering Group and then passed on to the Planning Consultant. The full report can be found here: <https://bramshottandliphookndp.uk/2023-05-09-appendix-march-23-public->

[consultation-findings/](#)

2.52. The highest engagement was in relation to Chapters 1 (Sustainable Development and Housing), and 3 (Safe and Active Travel). This was in line with consistent concerns about traffic and housing in the area. Of the 257 policy votes, 235 were in support of a policy and 22 were against, showing encouraging support for the NDP. Several comments were on local issues beyond the remit of the BLNDP, such as public transport and changes to roads, so it was agreed that a focus of future marketing would be on explaining what an NDP can and cannot do, including with an updated FAQs page on the website.

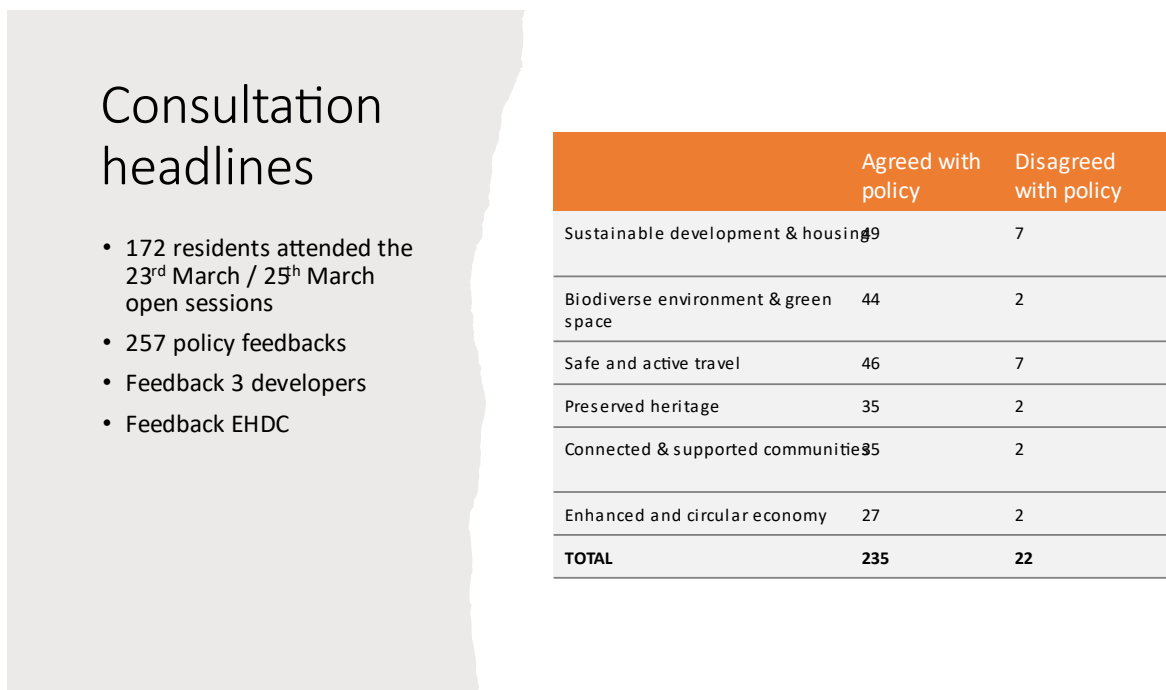


Figure 18: Headlines taken from the March consultation report

2.53. The Steering Group finalised the **Pre-Submission Draft and this was approved by the Parish Council in July 2023**. The BLNDP moved onto the **Regulation 14 consultation phase**, which was held between 28 July 28 and 22 September 2023.

2.54. The Pre-Submission Draft Plan was uploaded to view online on the BLNDP website, with links on the Parish Council, EHDC and SDNP’s websites. Borrowable paper copies were printed and kept at the Liphook Millennium Centre and Parish Council office for the duration of the consultation. Both spaces also had displays with the policies, maps, and instructions for giving feedback.

2.55. The Steering Group ran two evening drop-in sessions for residents to ask questions and hear the story of the plan. A meeting was also held with developers that had engaged throughout the development of BLNDP (open to members of the public) for them to present on the opportunities of the BLNDP.



Figure 19: Displays at the Liphook Millennium Centre and Parish Council office

- 2.56. An online survey was created to give feedback on the plan and/or specific policies within the plan. Paper copies were also available on request.
- 2.57. The owners of the proposed Local Green Spaces and proposed Non-Designated Heritage Assets were contacted by email or post before the Regulation 14 consultation was launched.
- 2.58. The consultation was advertised in the following ways:

- Press releases (see reach figures in table below)
- Banners around the Parish (see photo below)
- Steering Group manning the display stands at community events including cinema screenings and the monthly market
- Social media: regular posts through the Parish Council page



Figure 20: Example promotional banner

| PUBLICATION | CIRCULATION | SPRING 2023 | AUTUMN 2023 | TOTAL |
|-----------------------|-------------|-------------|-------------|--------|
| VANTAGEPOINT Magazine | 24,015 | X | X | 48,030 |
| LIPHOOK MAGAZINE | 4,500 | X | X | 9,000 |
| Haslemere HERALD | 5,700 | X | X | 11,400 |
| No of Press Articles | | | | 6 |
| Leaflet circulation | 6,000 | 6000 | | |
| TOTAL | | | | |

Figure 21: Advertising reach for March consultation (spring) and Regulation 14 (autumn)

| | Audience Reach |
|---|----------------|
| Facebook Liphook Community Board | 9,000 |
| Facebook Liphook Millenium Centre(LMC) | 1000 |
| Facebook B&L PC | 294 |
| TOTAL | 10,294 |

Figure 22: Audience reach for regular posts on the Parish Council, LMC and Liphook Community Board Facebook pages

Social Media Adverts (Reg 14) July- Sept 2023



Figure 23: Social media advertising the Regulation 14 consultation

2.59. The reach of Regulation 14:

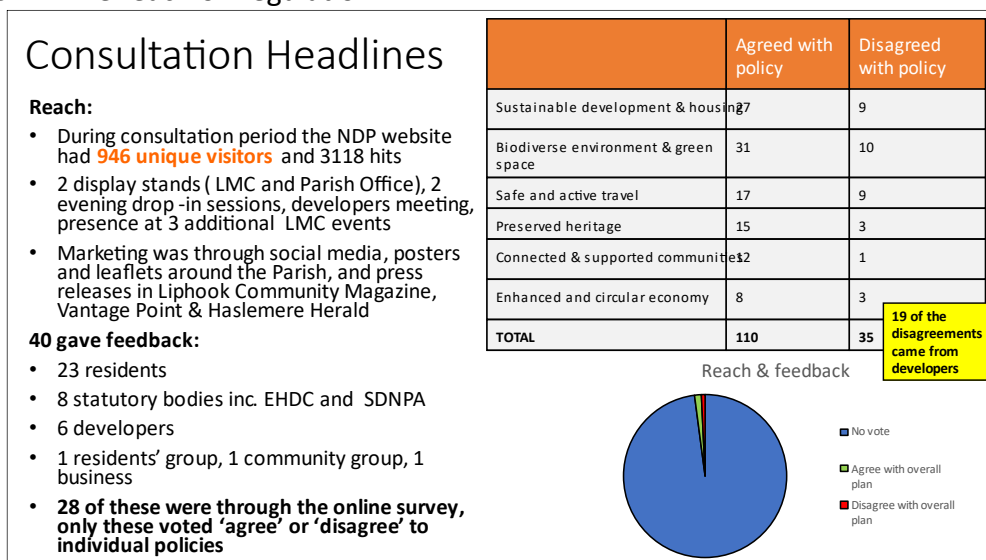


Figure 24: Headline findings from the Reg 14 consultation

2.60. In addition to consulting with the local community, the Steering Group wrote to statutory consultees and other organisations who had an interest in the Plan. A list of the consultees contacted is contained in Appendix A and responses were received from the following:

- EHDC
- SDNPA
- Thames Water
- Hampshire and Isle of Wight NHS ICB
- Surrey County Council Minerals and Waste
- Natural England
- National Highways
- Liss Parish Council
- 6 Developers
- Bramshott & Liphook Heritage Society
- South East Liphook Residents Group
- AMK Chauffeur Drive
- Non-designated Heritage Assets: The Deers Hut Pub, Jubilee Terrace properties, Priors House, Passfield Oak
- Local Green Spaces: Shipley Court Shared Space, Land Adjacent to Presbytery

2.61. Representations received at the Pre-Submission Consultation were recorded by topic/policy and carefully considered by Steering Group members, the planning consultant and in discussion with officers at EHDC and SDNP. The comments and responses from the Steering Group are set out in Appendix B, saved as a separate document due to its size.

2.62. A report, summarising and detailing the changes made following the Pre-Submission (Regulation 14) consultation was prepared, presented at a Steering Group meeting and uploaded to the BLNDP website. The slide deck report can be found here:
<https://bramshottandliphookndp.uk/wp-content/uploads/2024/01/2023-11-14-SG-slides-Reg14-Feedback-Slide-Deck-Final.pptx>

Stage V: Submission Version Neighbourhood Development Plan – 2024

2.63. Following the changes made to the BLNDP as a result of the Regulation 14 consultation, the Submission Version was formally submitted to East Hampshire District Council who, once satisfied that the correct set of documents have been received, will undertake the Regulation 16 consultation. The document will then proceed to Examination and, assuming a favourable outcome, to referendum.

3 CONCLUSION

- 3.1. The Steering Group has undertaken a very thorough engagement programme in order to develop the Bramshott and Liphook Neighbourhood Development Plan. It has set out a comprehensive vision and objectives and guiding principles. In developing the policies to achieve the vision and objectives, the Group has actively engaged with a wide range of stakeholders and the Plan has evolved accordingly.
- 3.2. Feedback from the Regulation 14 consultation has enabled the Plan to be shaped into its final version, to submit to EHDC.
- 3.3. This report fulfils the requirements for the Consultation Statement, set out in Regulation 15(2) of the Neighbourhood Planning Regulations 2012.
- 3.4. Gratitude is extended to everybody who has contributed to the Plan's development, either as a valued member of the Steering Group and Working Groups or those who have taken the time to contribute their views and opinions. This has been invaluable in helping to shape the scope and content of the Neighbourhood Development Plan.

APPENDIX A: STAKEHOLDERS CONTACTED AT THE REGULATION 14 CONSULTATION

The following were written to as part of the Pre-Submission Consultation at Regulation 14.

| |
|---|
| Neighbouring Parishes |
| Whitehill CP |
| Headley CP |
| Grayshott CP |
| Milland CP Chichester District |
| Linchmere CP Chichester District |
| |
| Neighbouring Councils |
| Basingstoke and Deane Borough Council |
| Hart District Council |
| Waverley Borough Council |
| Chichester District Council |
| Havant Borough Council |
| Winchester City Council |
| South Downs National Park |
| Hampshire County Council |
| Surrey County Council |
| West Sussex County Council |
| |
| Statutory Bodies |
| Environment Agency |
| Historic England |
| Natural England |
| Network Rail |
| EE Mobile Phone |
| EMF Enquiries |
| National Highways |
| Homes England |
| Intergrated Care Network (Formerly CCG) |
| Intergrated Care Network (Formerly CCG) |
| Intergrated Care Network (Formerly CCG) |
| National Grid |
| Portsmouth Water Catchment Management |
| Portsmouth Water Developer Service |
| Southern Water (treatment, southern) |
| SSE |
| SGN |
| Office Rail and Road |
| Integrated Transport Authority |
| LEP |

| |
|---|
| Active Travel England |
| |
| General groups/ community |
| Action Hampshire |
| Campaign for Real Ale |
| Championing the Rural Economy |
| Citizens Advice |
| Community First |
| CPRE Hampshire |
| Flick Drummond |
| Forestry Commission Consultations |
| Forestry England |
| Friends Family and Travellers |
| General Consultee |
| Gosport Borough Council |
| Hampshire and IOW Wildlife Trust |
| Hampshire Chamber |
| Hampshire Fire Service |
| Hampshire Police and Crime Commissioner |
| House Builders Federation |
| Mobile UK |
| Local MP |
| National Gypsy Traveller Federation |
| National Trust |
| RSPB |
| Showmens' Guild |
| Solent LEP Consultations |
| South Downs Society |
| Sport England |
| Sport England |
| Stagecoach |
| SW Railway |
| Test Valley |
| The Crown Estates |
| Western Bypass |
| Woodland Trust |
| Esso pipeline (existing) |
| |
| Community groups |
| Liphook Church |
| Village Hall |
| Methodist Church |
| Trinity Church |
| St Mary's |
| Bramshott Parish Club & Institute |

| |
|--|
| Conford Village Hall Trust. |
| Liphook Village Hall Management Comm |
| The Passfield Club |
| B&L Horticultural Society |
| Liphook in Bloom |
| Arts & Crafts Society |
| Heritage Society |
| Countryside companions walking group |
| Liphook and District Businessmen's Association (LiDBA) |
| Liphook Model Railway Club |
| Liphook U3A |
| Liphook Day Centre |
| Bohunt Manor Golf Club |
| River Wey Trust |
| |
| Developers |
| Countryside |
| Carla Homes |
| Harrow Estates |
| Vail Williams |
| AMK |
| Bloor Homes |
| Ashill/McCarthy Stone |
| Reside Developments |
| |
| Community Groups |
| Owners of the proposed local green spaces |
| Owners of the proposed non-designated heritage assets |
| Local businesses and services |

4 APPENDIX B - COMMENTS RECEIVED AT PRE-SUBMISSION (REGULATION 14) CONSULTATION AND PROPOSED RESPONSES FROM THE STEERING GROUP

This is saved as a separate document due to its size.