

Bramshott and Liphook Neighbourhood Development Referendum

Information Statement

A Referendum relating to the adoption of the Bramshott and Liphook Neighbourhood Plan will be Wednesday 23rd October 2024.

The question which will be asked in the Referendum is:

“Do you want East Hampshire District Council and the South Downs National Park Authority to use the Neighbourhood Plan for Bramshott and Liphook to help it decide planning applications in the neighbourhood area.”

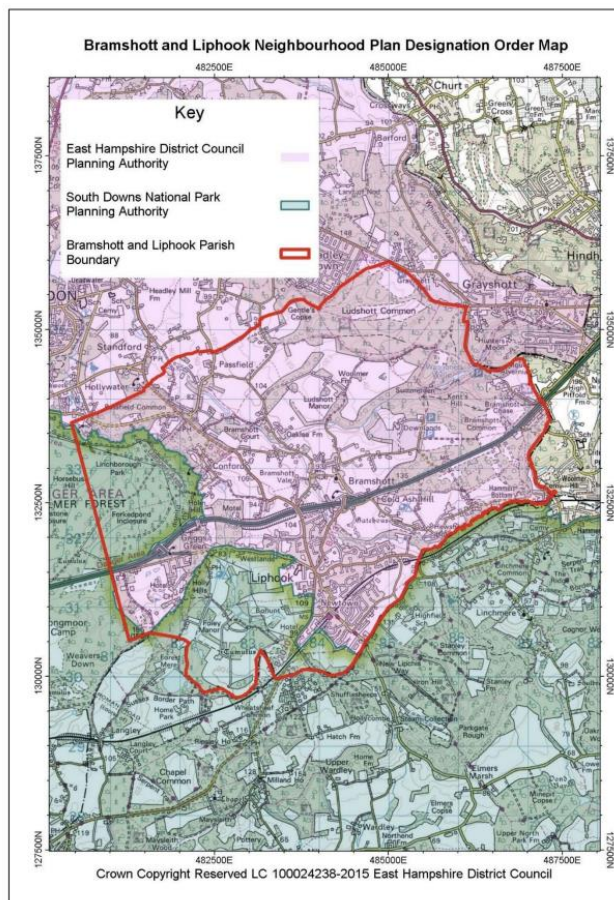
The Referendum area is shown on the adjacent map.

It is identical to the area which has previously been designated as the Bramshott and Liphook Neighbourhood Designation Area.

A person is entitled to vote in the Referendum if on Wednesday 23rd October 2024:

- He or she is entitled to vote in a local government election in the Referendum area; and
- His or her qualifying address for the election is in the Referendum area.

A person’s qualifying address is, in relation to a person registered in the register of electors, the address in respect of which he or she is entitled to be registered.



The Referendum expenses limit that will apply in relation to the Referendum is £2820.02 The number of persons entitled to vote in the Referendum by reference to which that limit has been calculated is 7763.

The Referendum will be conducted in accordance with procedures which are similar to those used at local government elections.

A copy of the documents listed below, may be inspected on the District Council's website at <https://www.easthants.gov.uk/planning-services/planning-policy/neighbourhood-planning/emerging-neighbourhood-plans/bramshott-and>

Paper copies are also available for inspection, at the following locations :

- East Hampshire District Council, Monterey House, Bedford Road, Petersfield, Hampshire GU32 3LJ (Monday to Friday 9.00am - 5.00pm) **BY APPOINTMENT ONLY** please email neighbourhoodplans@easthants.gov.uk or call 01730 234339 to make an appointment to view the documents;
- Liphook Millenium Centre, Ontario Way, Liphook, GU30 7LD (Monday to Friday – 10:00am – 2:00pm);
- Liphook Library, London Road, Liphook, GU30 7AN (Monday 1:00pm to 5:00pm and Wednesday, Friday and Saturday 9:30am to 1:30pm); and
- Bramshott and Liphook Parish Office, The Haskell Centre, Midhurst Road, Liphook GU30 7TN (Monday to Friday – 10:00am to 1:00pm).

The specified documents are:

- The draft Bramshott and Liphook Neighbourhood Development Plan, as modified;
- The report of the independent examiner into the Bramshott and Liphook Neighbourhood Development Plan;
- A summary of the written representations submitted to the independent examiner;
- The Decision Statement of East Hampshire District Council that the Bramshott and Liphook Neighbourhood Plan meets the basic conditions specified by statute and complies with the provision made by or under Section 38A and 38B of the Planning and Compulsory Purchase Act 2004; and
- Statements that sets out general information as to town and country planning including neighbourhood planning and the referendum process.

For queries about neighbourhood planning in general, please contact East Hampshire District Council's Planning Policy Team on neighbourhoodplans@easthants.gov.uk or call 01730 234339 or contact South Downs National Park Authority on planningpolicy@southdowns.gov.uk

East Hampshire District Council

Dated: 13th September 2024